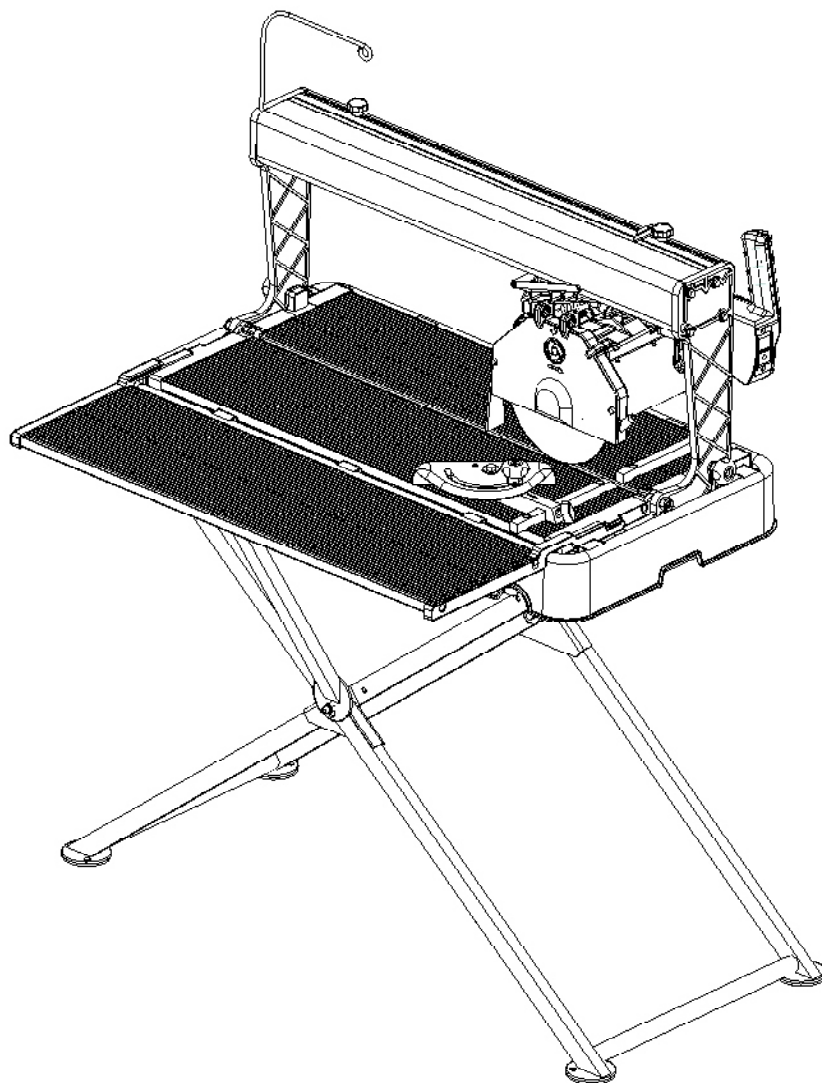


COMBI 200 VA

SAWING MACHINE



OPERATING, MAINTENANCE, SPARE PARTS MANUAL

IMER U.S.A. Inc.

Toll Free: (800) 275-5463

www.imerusa.com

info@imerusa.com

IMER WEST

3654, Enterprise Avenue

Hayward, CA 94545

Tel 510 - 670 - 7970

Fax 510 - 783 - 4255

IMER EAST

221 Westhampton Place

Capitol Heights, MD 20743

Tel 301 - 336 - 3700

Fax 301 - 336 - 6681

2006/03

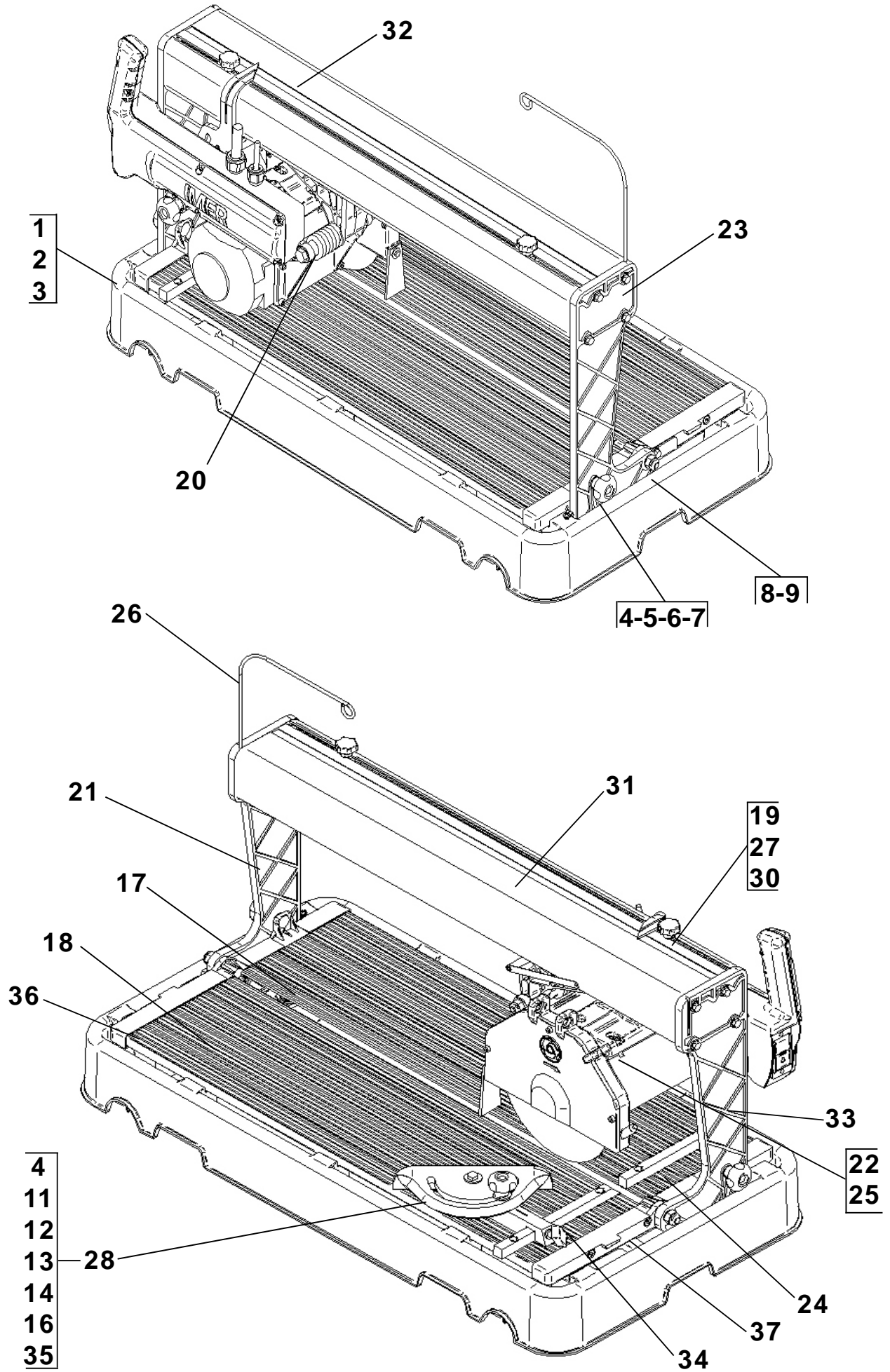
- Cod. 3226123 -

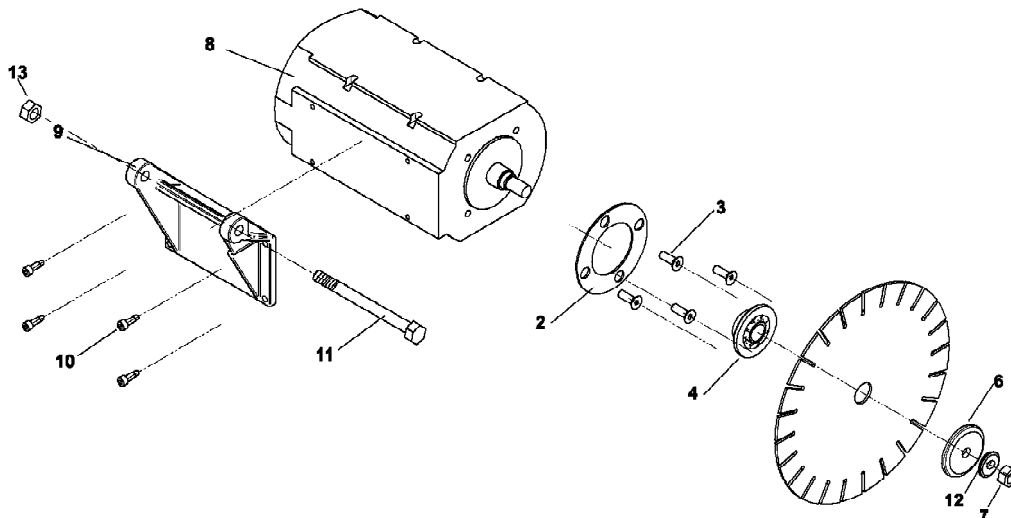
18. SPARE PARTS :All orders for spare parts must indicate the following: 1 - Type of machine.2 - Part number and position number of each part.3 - Serial number and year of manufacture reported on the machine's identification plate.

SYMBOL: Interchangeability (example):Pos..1 P.n. 2222002 was installed on machincs up to N° 5240 and Pos.1.1 P.n. 2222018 installed on machine N° 5241 onwards. Pos. 1.1 is interchangeable () with Pos. 1.Pos. 1 and Pos. 1.1 are not interchangeable if the () symbol appears in the table.

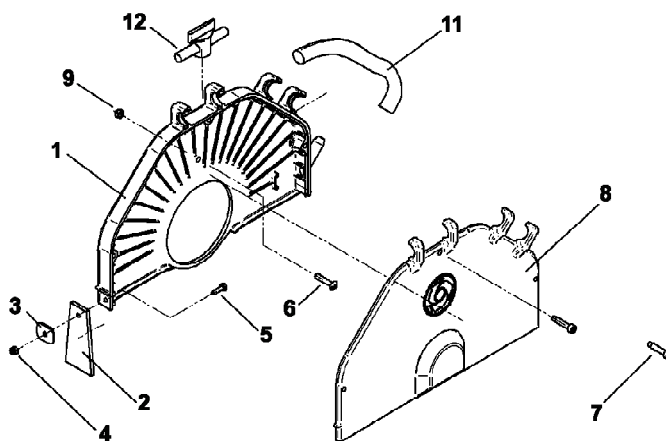
| SPARE PARTS | | | NOTES |
|-------------|---------|-------|-------|
| Ref. | Code | | |
| 1 | 2222002 | SCREW | 5240 |
| 2 | 2222018 | SCREW | 5241 |

| TAV. 1 STRUTTURA MACCHINA - STRUCTURE MACHINE - MACHINE STRUCTURE - MASCHINENAUFBAU - ESTRUCTURA DE LA MAQUINA | | | | | | | |
|----------------------------------------------------------------------------------------------------------------|---------|---------------------|---------------------|----------------------|-------------------------|------------------------|-------------|
| Rif. | Cod. | I | F | GB | D | E | Note |
| 1 | 3226287 | VASCA | CUVE | TANK | BECKEN | RECIPIENTE | |
| 2 | 2222449 | VITE | VIS | SCREW | SCHRAUBE | TORNILLO | 6954 3,5X19 |
| 3 | 2235428 | TAPPO | BOUCHON | CAP | STOPFEN | TAPÓN | |
| 4 | 3210576 | RONDELLA | RONDELLE | WASHER | UNTERLEGSCHIEBE | ARANDELA | |
| 6 | 2284866 | POMELLO | POIGNEE | KNOB | KNOPS | POMO | |
| 7 | 3223318 | VITE | VIS | BOLT | SCHRAUBE | TORNILLO | 8X30 |
| 8 | 2223920 | DADO | ECROU | NUT | MUTTER | TUERCA | AUTOBL. M10 |
| 9 | 3226087 | RONDELLA | RONDELLE | WASHER | UNTERLEGSCHIEBE | ARANDELA | |
| 11 | 3211381 | POMELLO | POIGNEE | KNOB | KNOPS | POMO | |
| 12 | 3226075 | SUPPORTO GONIOMETRO | SUPPORT GONIOMÈTRE | GONIOMETER SUPPORT | WINKELMESSER-HALTERUNG | SOPORTE DEL GONIOMETRO | |
| 13 | 3226077 | GONIOMETRO | GONIOMÈTRE | GONIOMETER | WINKELMESSER | GONIOMETRO | |
| 14 | 3223279 | POMELLO | POIGNEE | KNOB | KNOPS | POMO | |
| 16 | 2222189 | VITE | VIS | BOLT | SCHRAUBE | TORNILLO | 5737 8X45 |
| 17 | 3226264 | PIANO SX | PLATEAU GAUCHE | L.H. SURFACE | LINKE ARBEITSFLÄCHE | SUPERFICIE IZQ. | |
| 18 | 3226063 | PIANO DX | PLATEAU DROIT | R.H. SURFACE | RECHTE ARBEITSFLÄCHE | SUPERFICIE DCHA. | |
| 19 | 2222776 | VITE | VIS | BOLT | SCHRAUBE | TORNILLO | 5739 6X16 |
| 20 | 3210087 | MOLLA | RESSORT | SPRING | FEDER | MUELLE | |
| 21 | 3226007 | BRACCIO ANTERIORE | BRAS AVANT | FRONT ARM | VORDERER ARM | BRAZO ANTERIOR | |
| 22 | 2223280 | DADO | ECROU | NUT | MUTTER | TUERCA | |
| 23 | 3210099 | VITE | VIS | BOLT | SCHRAUBE | TORNILLO | |
| 24 | 3226071 | BATTUTA DESTRA | BUTÉE DROITE | RIGHT FENCE | RECHTER ANSCHLAG | TOPE DERECHO | |
| 25 | 2222541 | VITE | VIS | SCREW | SCHRAUBE | TORNILLO | 5931 6X25 |
| 26 | 3210070 | ASTA | TIGE | ROD | STAB | VARILLA | |
| 27 | 3210071 | SUPPORTO | SUPPORT | SUPPORT | UNTERLAGE | SOPORTE | |
| 28 | 3226093 | GONIOMETRO COMPLETO | GONIOMÈTRE COMPLETE | GONIOMETER ASSEMBLY | KOMPLETTES WINKELMESSER | GONIOMETRO COMPLETO | |
| 30 | 3204865 | POMELLO | POIGNEE | KNOB | KNOPS | POMO | |
| 31 | 3210069 | ADESIVO BATTUTA | ADHSIF BUTEE | FENCE ADHESUVE LABEL | SCHILD ANSCHLAG | ADHESIVO TOPR | |
| 32 | 3226061 | GUIDA SCORRIMENTO | COULISSE | SLIDEWAY | GLEITFÜHRUNG | GUÍA DE DESLIZAMIENTO | |
| 33 | 3226013 | BRACCIO POSTERIORE | BRAS ARRIÈRE | REAR ARM | HINTERER ARM | BRAZO POSTERIOR | |
| 34 | 3226072 | BATTUTA SINISTRA | BUTÉE GAUCHE | LEFT FENCE | LINKER ANSCHLAG | TOPE IZQUIERDO | |
| 35 | 3226254 | ASTA GONIOMETRO | TIGE GONIOMÈTRE | GONIOMETER ROD | WINKELMESSERS STANGE | GONIOMETRO | |
| 36 | 3226068 | FIANCATA ANTERIORE | CÔTÉ ANTÉRIEUR | FRONT SIDE | VORDERE SEITE | PANEL DELANTERO | |
| 37 | 3226067 | FIANCATA POSTERIORE | CÔTÉ POSTÉRIEUR | REAR SIDE | HINTERE SEITE | PANEL TRASERO | |

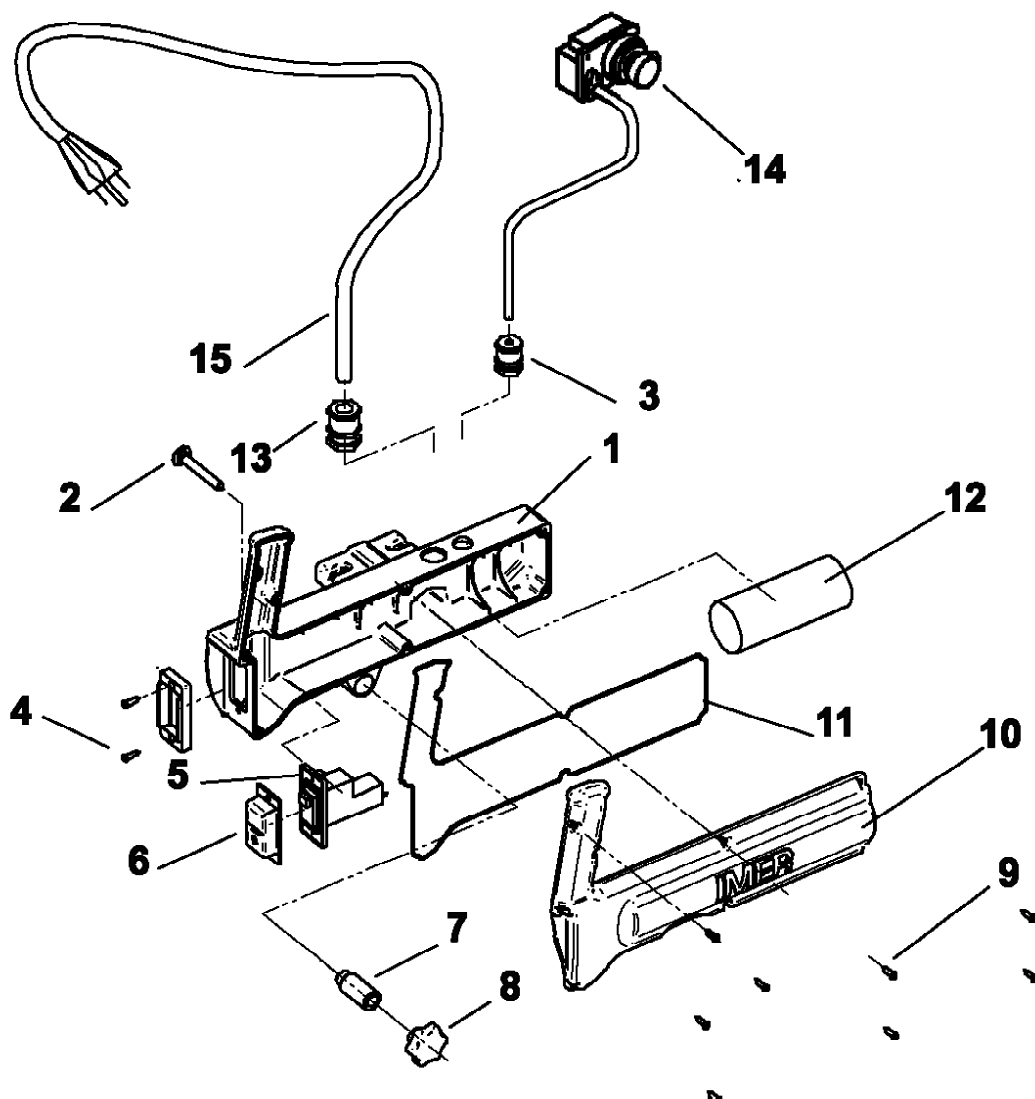




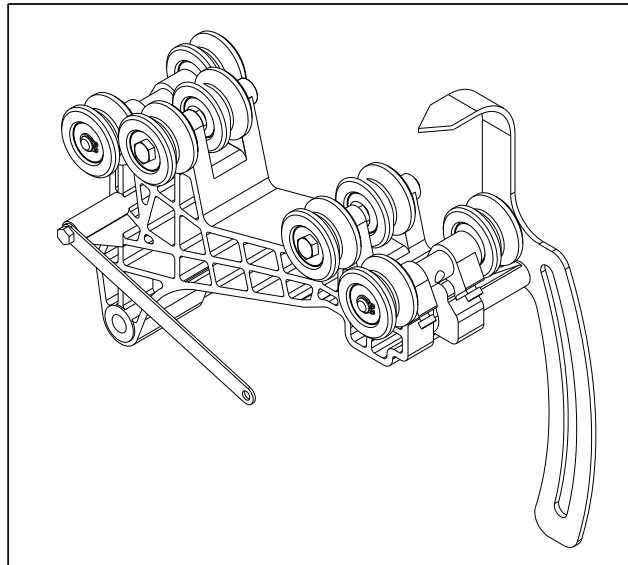
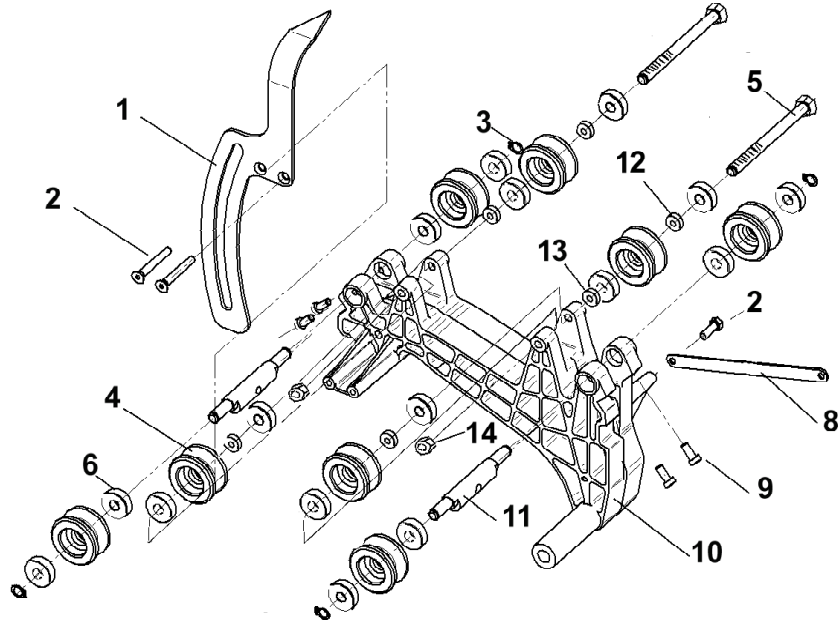
| TAV. 2 ASSEMBLY OF MOTOR - | | | |
|----------------------------|---------|----------------|------------|
| Ref. | Code | Description | Notes |
| 2 | 3210043 | SPACER BRACKET | |
| 3 | 3201339 | SCREW | 5933 M8x25 |
| 4 | 3210238 | INNER FLANGE | |
| 6 | 3210046 | OUTER FLANGE | |
| 7 | 3210053 | NUT | M12 SX |
| 8 | 3226115 | MOTOR | 115V-60Hz |
| 9 | 3210038 | ENGINE SUPPORT | |
| 10 | 2222541 | SCREW | 5739 M6x16 |
| 11 | 3210637 | SCREW | |
| 12 | 2224380 | WASHER | 6593 12X25 |
| 13 | 2223920 | NUT | M10 |



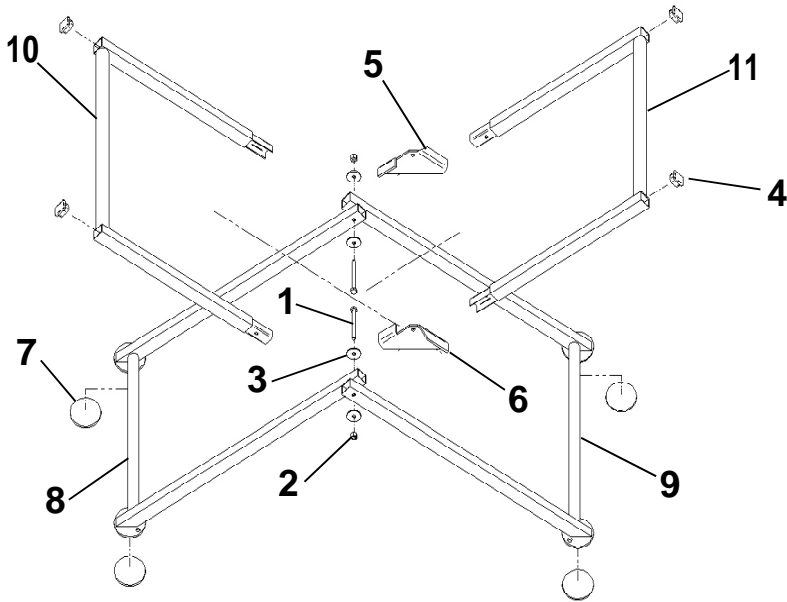
| TAV. 3 - BLADE GUARD | | | |
|----------------------|---------|--------------|------------|
| Ref. | Code. | Description | Notes |
| 1 | 3226079 | BLADE GUARD | |
| 2 | 3210050 | SPRAY SHIELD | |
| 3 | 2224535 | WASHER | |
| 4 | 2223926 | NUT | AUTOBL. M4 |
| 5 | 2222001 | SCREW | 5739 M4x20 |
| 6 | 3209060 | SCREW | 5737 M6X35 |
| 7 | 3204399 | SCREW | 5931 M5x25 |
| 8 | 3226080 | BLADE GUARD | |
| 9 | 2223924 | NUT | 5588 M6 |
| 11 | 2292365 | TUBE | |
| 12 | 3207884 | COCK | |



| COD.3210216 | | TAV. 4 - ELECTRIC PANEL | |
|-------------|---------|-------------------------|------------|
| Ref. | Code | Description | Notes |
| 1 | 3210230 | JUNCTION BOX | |
| 2 | 3210096 | SCREW | 5732 M8X60 |
| 3 | 3210112 | CABLE CLAMP | |
| 4 | 3210120 | SCREW | |
| 5 | 3210233 | SWITCH | 115V |
| 6 | 3209340 | LEAKAGE PROTECTION | |
| 7 | 3210089 | TUBE | |
| 8 | 2284866 | HANDWHEEL | M8 |
| 9 | 2222460 | SCREW | |
| 10 | 3210231 | COVER | |
| 11 | 3210111 | GASKET | |
| 12 | 3210232 | CAPACITOR | 115V |
| 13 | 3210113 | CABLE CLAMP | |
| 14 | 3210524 | WATER PUMP | 115V |
| 15 | 3209065 | PLUG+ELECTRIC CABLE | 115V |



| COD.3226053 | | TAV. 5 - CARRIAGE | |
|-------------|---------|-------------------|-----------|
| Ref. | Code | Description | Notes |
| 1 | 3226081 | CARRIAGE BLOCK | |
| 2 | 3210105 | SCREW | |
| 3 | 3210627 | RING | |
| 4 | 3207397 | WHEEL ASSEMBLY | |
| 5 | 2222114 | SCREW | |
| 6 | 3204945 | BEARING | 608 2RS1 |
| 8 | 3210029 | BLADE GUARD | |
| 9 | 3210036 | SCREW | TCEI SX16 |
| 10 | 3210031 | CARRIAGE | |
| 11 | 3210032 | CAM | |
| 12 | 3207393 | SPACER BRACKET | |
| 13 | 3210622 | SPACER BRACKET | |
| 14 | 2223920 | NUT | M10 |



| TAV 6 - TRESTLE ELEMENT | | | |
|-------------------------|---------|------------------------|------------|
| Ref. | Code | Description | Notes |
| 1 | 2222091 | BOLT | 5737 8X60 |
| 2 | 2223923 | NUT | AUTOBL. M8 |
| 3 | 2224190 | WASHER | 8X32 |
| 4 | 3206205 | TERMINAL | |
| 5 | 3207193 | RIGHT RABBET | |
| 6 | 3207194 | LEFT RABBET | |
| 7 | 3210646 | RUBBER COATING | |
| 8 | 3226224 | INNER LOWER HALF STAND | |
| 9 | 3226225 | OUTER LOWER HALF STAND | |
| 10 | 3226226 | OUTER UPPER HALF STAND | |
| 11 | 3226227 | INNER UPPER HALF STAND | |

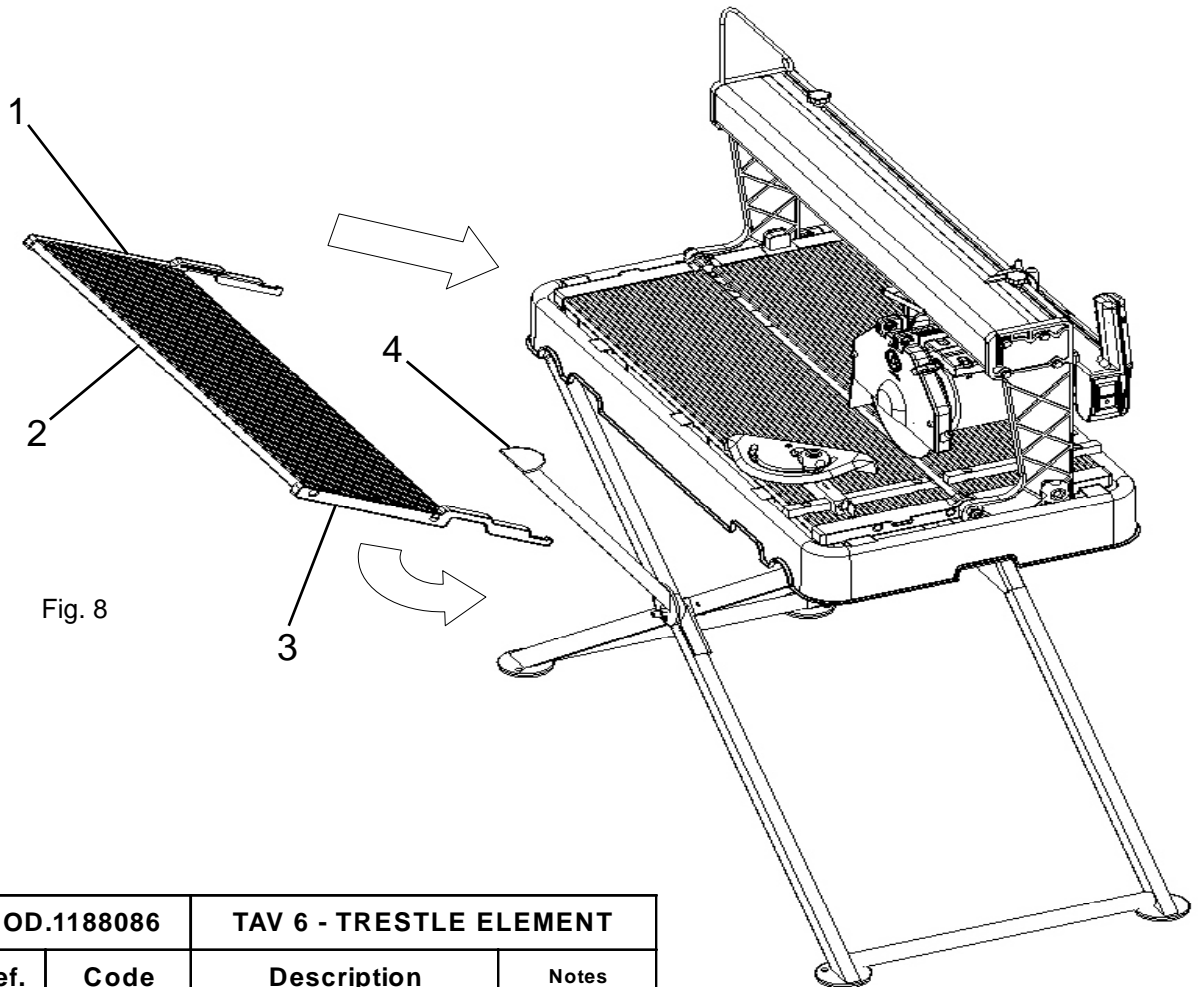


Fig. 8

| COD.1188086 | | TAV 6 - TRESTLE ELEMENT | |
|-------------|---------|-------------------------|-------|
| Ref. | Code | Description | Notes |
| 1 | 3226146 | SUPPORT | |
| 2 | 3226065 | SIDE ROLLER TABLE | |
| 3 | 3226145 | SUPPORT | |
| 4 | 3226233 | SUPPORT | |



This is a contact addendum to our manuals

Imer USA East

221 Westhampton Pl
Capitol Heights, MD 20743

Phone: 301-336-3700

Fax: 301-336-6687

Order Fax:301-336-5811

Imer USA West

3654 Enterprise Ave
Hayward, CA 94545

www.imerusa.com

800-275-5463