

GB

ELECTROSPONGE BERTA ADV



RAIMONDI S.p.A.

CE DECLARATION OF CONFORMITY

Raimondi S.p.A. hereby declares that the “**BERTA**” electrosponge fulfils the essential requirements of the following Directives:

EC Directive 98/37 (Machine Directive)

EEC Directive 73/23/ (Low Voltage Directive).

RAIMONDI S.p.A.
Via dei Tipografi, 11 MODENA (ITALIA)
General Manager
Ivan Raimondi

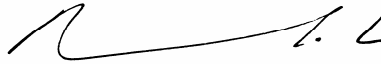



Table of Contents

Use	4
Precautions	4
Technical data	4
Transport	5
Checking before use	5
Fitting	5
Preparing the machine	6
Using the machine	6
Dosing water in the sponge roller	7
Tools	7
Replacing the sponge roller	8
Cleaning the tank	9
Washing the sponge roller	9
Storing the machine	9
Replacing the water sealing plugs	10
Decommissioning	10
Troubleshooting	10

Before leaving the factory, the machine you have purchased undergoes a series of tests to ensure quality, safety and efficiency.

If you follow the instructions in this manual carefully, under normal operating conditions, your machine will last a long time.

Before using the machine, read this manual carefully in order to prevent accidents and malfunctioning.

Use

The “BERTA ADV” electrosponge has been designed to clean floors during the grouting of floor tiles. The machine cleans away excess grout and epoxy sealant, whilst smoothing the joints between tiles. The machine is suitable for use on floors tiles with terracotta, ceramics, vitrified stoneware, marble, porphyry, etc.

Precautions

Never leave the machine unattended or within the reach of children.

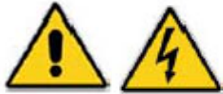
Keep the working area clean and well lit. Never expose the machine to rain.

Machine noise emission levels under working conditions are provided in the “TECHNICAL DATA” paragraph. For more detailed information, also see Italian Law 277/91.

Before plugging the machine into the mains socket, make sure that the power supply voltage is compatible with rating plate specifications.

If it is not compatible, do not plug in the machine and contact an authorised service centre or your dealer.

Always use an effectively grounded cable to hook up the machine. When in doubt, do not plug the machine in.



Technical data

	OPERATING WEIGHT	DIMENSIONS	SPEED
BERTA	29 KG	660 X 550 X 500 MM	1

230 V ~ 50Hz 120 W 1.2A 2800 n ⁻¹ MOTOR CLASS F	110 V ~ 50/60Hz 120 W 2.5A 2800-3360 n ⁻¹ MOTOR CLASS F
--	--

The noise emitted by the machine described in this manual was measured in compliance with the ISO 3754-77 and ISO CD 11201-91 standards on production samples.

K = 2 [db], pR EN 848-1

Lw 80.1 [dBw(A) 0.1 [mW(A)]

Lop 68.1 [dB(A) 77.8 [mW(C)]



Transport

Wind up loose power cables, without knots or kinks.

Never lift or carry the machine by the power supply cable. Never disconnect the machine by pulling the power supply cable.

Never transport the machine while it is still plugged in.

Unscrew the knobs illustrated in figure 1 and hold down the handle.

To avoid deforming the sponge roller assembly, make sure it is not in contact with the floor and that the water dosing lever is released.

Checking before use

Before using the machine, check for any broken, worn or damaged parts and replace them immediately.

For spare parts and accessories, always follow the instructions provided in this manual.

Use only original spare parts.

For the best performance and utmost safety, always keep the machine clean and lubricated.

Always unwind the power supply cord completely and check it for damage.

Before plugging in the machine, make sure the power switch is "OFF".

Plug the machine into a 230V 10/16A socket. As a precautionary measure, check the information given on the MACHINE DATA PLATE.

If an extension cord is used, make certain that the section is at least 1.5 mm².

Make sure that the sponge roller is neither warped nor damaged.

Fitting

Make sure that the tank has been correctly fitted.

Raise the handle and lock at the requested height and position, by tightening the knobs (A) illustrated in figure 1.

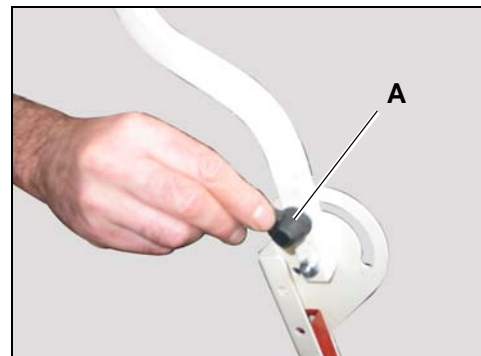


FIG. 1

Preparing the machine

Before using the machine to clean a floor, moisten the sponge. Fill the tank with about 15 litres of cold and clean water.

Shift the lever (A) to its upright position (figure 2).

Operate the switch and let the sponge roller run for about 30 seconds.

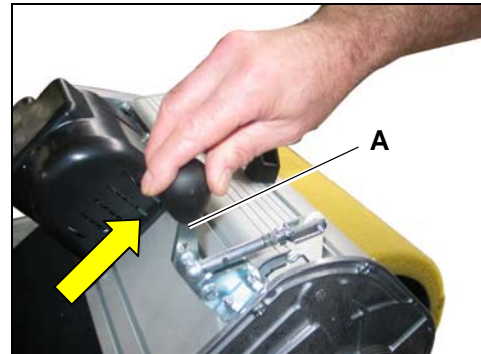


FIG. 2

Shift the lever (A) back to its horizontal position (figure 3). The machine is now ready for use.



FIG. 3

Using the machine

Before performing cleaning operations, make sure that the sealant has sufficiently settled.

If the sealant has hardened on the tile surface, wet the floor and emulsify the sealant with a brush and felt pad. **NEVER INCREASE PRESSURE ON THE SPONGE ROLLER BY PUSHING THE HANDLE UPWARDS.**

Return to the beginning of the area to clean with the sponge roller in its raised position.

To do so, hold the machine's handle down.

Lower the sponge roller to the floor and start moving slowly backwards, preferably in a diagonal manner with respect to the tile installation direction.

By doing so, you will perfectly clean the tiled surface from any grouting material.

Once you have reached the end of the area to clean, raise the sponge roller, turn the machine and return to the beginning of the area to clean.

Lower the sponge roller so that it overlaps the area previously treated by about 5 cm (figure 4).

When cleaning close to room walls, make sure that the motor guard does not come into contact with the wall.

If foam forms in the tank during use, add a few drops of an anti-foam product.

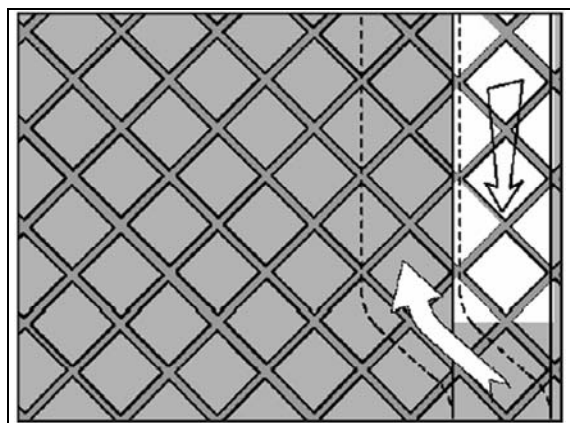


FIG. 4

Dosing water in the sponge roller

To increase or reduce the moisture content of the sponge roller, proceed as follows:

- shift the lever (A) to its upright position (figure 2 - page 6)
- raise the stopping spring (B - figure 5) and remove it;

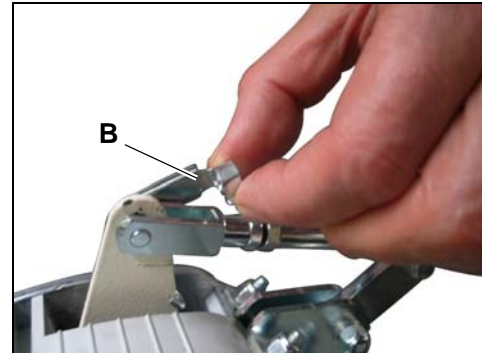


FIG. 5

- loosen the nut (C - figure 6);

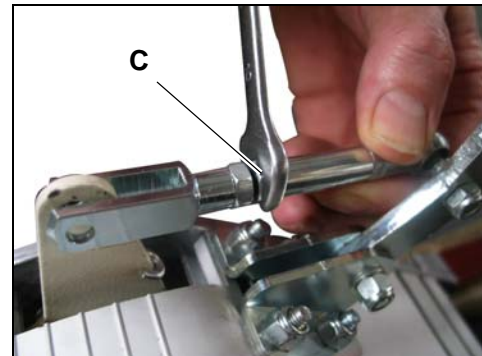


FIG. 6

- tighten the fork (D - figure 7) to reduce the amount of water in the sponge roller; loosen the fork to increase the amount of water;
- refit the stopping spring (B – figure 5) and tighten the nut (C - figure 6).

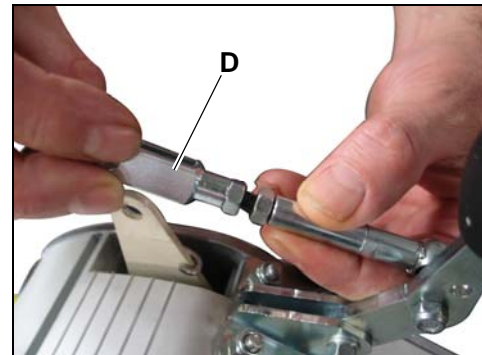


FIG. 7

Tools

“AVANA” sponge roller with medium absorption properties for cement based sealants.
 “SWEEPEX” sponge roller with high absorption properties for cement based sealants.
 “CELLULOSE” sponge roller for epoxy resin based sealants.

CELLULOSE SPONGE ROLLER FOR EPOXY PRODUCTS

Before fitting the roller, to prevent it getting damaged, soak it in cold and clean water for at least 1 minute.

Replacing the sponge roller



BEFORE PERFORMING ANY OPERATION, MAKE SURE THAT THE MACHINE IS UN-PLUGGED.

REMOVING THE SPONGE ROLLER

Shift the lever (A) to its upright position (figure 2 – page 6).
Move to the side opposite the motor casing.
Raise the handle (E – figure 8) and remove the quick release device (F – figure 8).

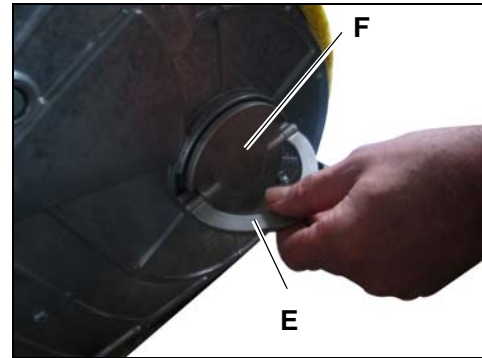


FIG. 8

Move to motor casing side. Using a screwdriver, raise the handle (G – figure 9) and remove the quick release device (H – figure 9).

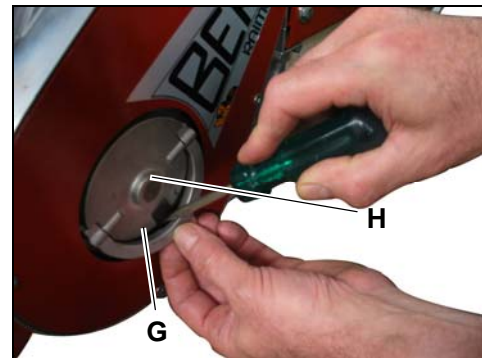


FIG. 9

FITTING A NEW SPONGE ROLLER

Shift the lever (A) to its upright position (figure 2 – page 6).
Place the sponge roller into its seat, keeping the side featuring the hexagonal notch on the right.
When fitting the roller, make sure the rubber water sealing plugs are facing upwards.
Move to motor casing side.
Fit the quick release device and the hexagonal pin (H – figure 9)
Turn the sponge roller by giving it short and light presses (forwards and backwards as shown in figure 10) whilst holding down the quick release device (H – figure 9), until it fits perfectly into the hexagonal notch of the roller.
Move to the side opposite the motor casing.
Fit the quick release device with its cylindrical pin (F – figure 8).



FIG. 10



IMPORTANT: QUICK RELEASE DEVICES (F/H – FIGURES 8/9) MUST FIT PERFECTLY INTO THEIR HOUSINGS.

Cleaning the tank



BEFORE PERFORMING ANY OPERATION, MAKE SURE THAT THE MACHINE IS UN-PLUGGED.

Shift the lever (A) to its upright position (figure 2 – page 6).
Raise the water conveyor belt and remove the tank (figure 11).

IMPORTANT

Any material drawn up from the floor deposits in the tank on the rear side of the machine.

The layer of material that builds up must never be thicker than 2 cm, in order to prevent it blocking the water conveyor belt.



FIG. 11

Washing the sponge roller

After cleaning the tank and filling it with cold and clean water, shift the lever (A) to its upright position to raise the sponge roller off the floor (figure 2 – page 6).

Operate the power switch and with the machine running lower the lever (A) (figure 3 – page 6) and raise it after 30 seconds.

Repeat this operation several times until the sponge roller is perfectly clean.

When the machine is in rest position, to prevent the sponge roller warping make sure the latter is raised off the floor and that the lever (A) is in its upright position (figure 2 – page 6).



IMPORTANT: FOR WASHING USE ONLY WATER. ALCOHOL OR DILUENTS MAY CAUSE THE SPONGE TO DETACH FROM THE ROLLER.

STORING THE SPONGE ROLLER

Store sponge rollers upright.

Rollers with cellulose sponges must be kept in plastic bags.

Storing the machine

Wash the sponge roller (see “Washing the sponge roller” on page 9).

In the event of long-term storage, remove the sponge roller.



IMPORTANT: QUICK RELEASE DEVICES (F/H – FIGURES 8/9) MUST FIT PERFECTLY INTO THEIR HOUSINGS.

MAINTENANCE



BEFORE PERFORMING ANY OPERATION, MAKE SURE THAT THE MACHINE IS UN-PLUGGED.

Grease moving parts on a periodic basis:
chain, bearings, wheel axle, belt tightening rollers.

Replacing the water sealing plugs

Shift the lever (A) to its upright position (figure 2 – page. 6).

Remove the sponge roller (see “Removing the sponge roller” on page 8).

Remove worn rubber plugs (L – figure 12) by loosening the fixing screws.

Fit the new plugs making sure that the long side is facing towards the tank.

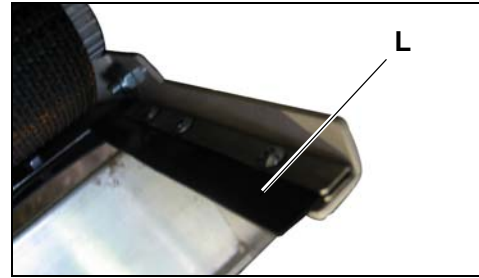


FIG. 12

Decommissioning



WHEN THE MACHINE, OR PARTS, ARE TO BE DEMOLISHED, FOLLOW THE INDICATIONS OUTLINED IN THE CURRENT LEGISLATION.

MACHINE BODY

STEEL "AC"
ALUMINIUM "AL"
POLYAMIDE "PA"

MOTOR

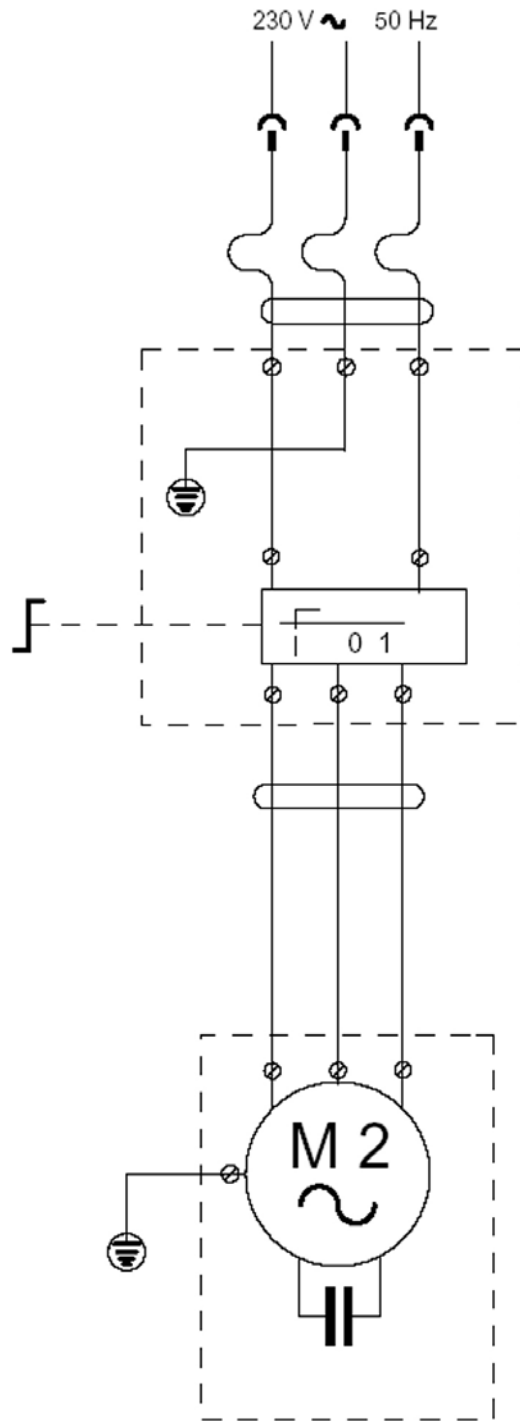
COPPER "CU"
ALUMINIUM "AL"
STEEL "AC"

SPONGE
ROLLER

RUBBER
PVC «PVC»
ABS «ABS»

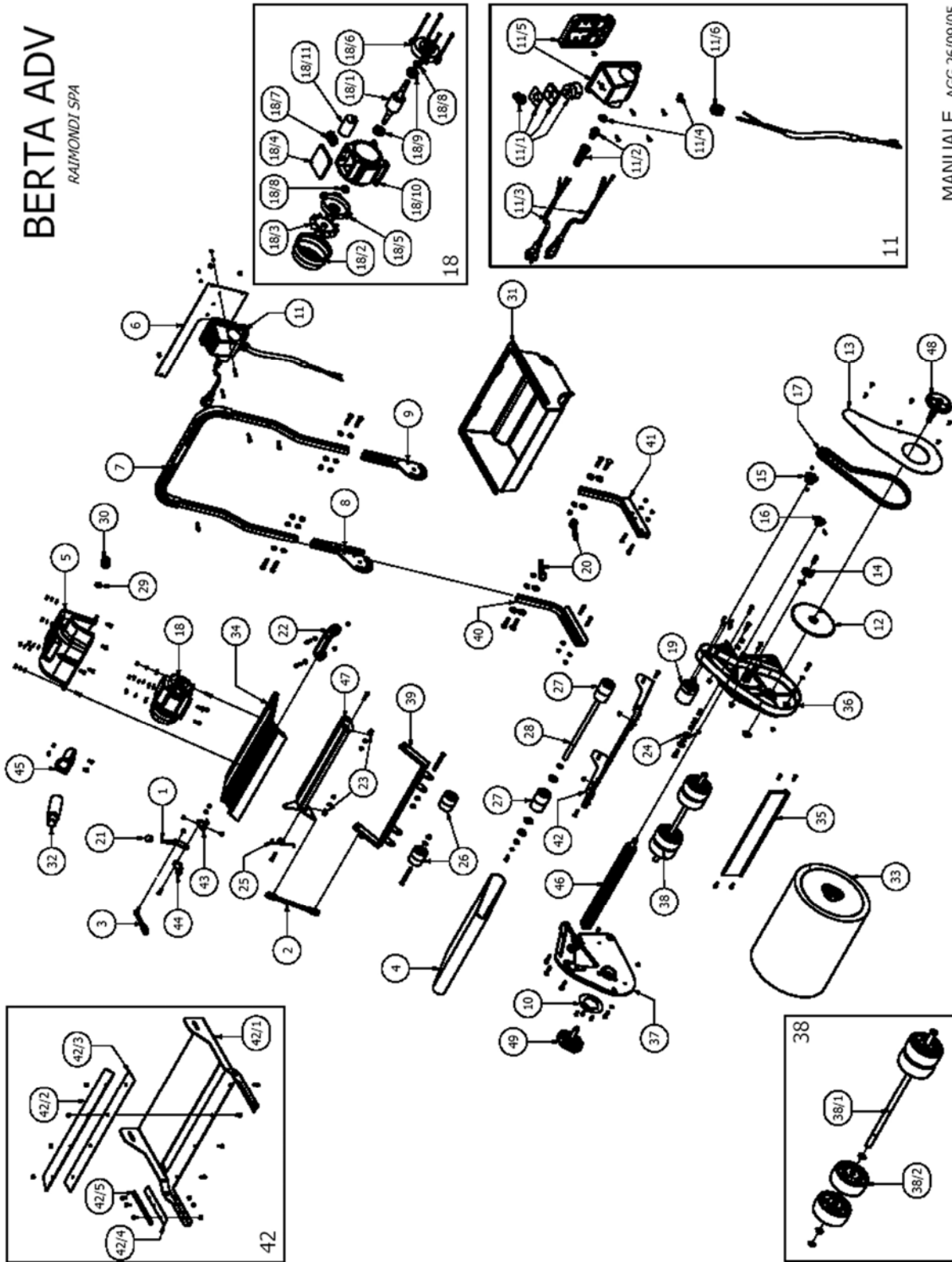
Troubleshooting

PROBLEM	CAUSE	REMEDY
The machine does not work	Plug has not been inserted properly into the socket	Push plug fully into socket
	Power supply cable is broken	Replace power supply cable
	No power at the 230V socket	Check power 230 V power supply socket or have it checked
	Switch is damaged	Replace switch
The motor hums when it is switched on and the sponge roller does not turn	Capacitor is faulty	Replace capacitor
	Abnormal friction in motor drive	Check moving parts Contact an authorised service centre or your dealer
Water leaks from the sides of the machine or between the sponge roller and tank	Rubber plugs on roller flanges are worn or facing downwards	Replace if broken or worn Turn plugs upwards
	Sponge roller is worn	Replace sponge roller
	Too much foam tends to form	Use anti-foam liquid
Motor is too noisy	Chain is not lubricated	Lubricate with grease
	Chain has slackened	Turn the chain tightener support
Irregular consumption of sponge roller	Improper use of machine	Never raise handle to increase pressure on the sponge roller, instead use the roller pressure adjustment knob
	Sponge roller is not parallel to floor	Contact an authorised service centre or your dealer



BERTA ADV

BERTA ADV
RAIMONDI SPA



BERTA ADV

POS.	PRODUCT CODE	PART NAME	POS.	PRODUCT CODE	PART NAME
1	128LE02D	ROLLER PRESSURE ADJUSTMENT LEVER			STARTER SPARE PARTS
2	128TI01A	TIE-ROD FOR BUMPER ADJUSTMENT	11	235ES01A	STARTER WITH CE PLUG (230V/50HZ)
3	128TI02A	TIE-ROD FOR SQUEEZER ADJUSTMENT	11	235ES02A	STARTER WITH US PLUG (115V/60HZ)
4	141NA04D	WATER CONVEYOR BELT	11/1	236IN02C	ON/OFF SWITCH
5	150PL02D	MOTOR CASING	11/2	320PS01C	SPIRAL CABLE LUG PG11
6	154ES06D	STARTER HOLDER	11/3	312SK02D	CABLE LL10MT WITH SHUKO PLUG
7	154ES07A	HANDLE	11/3	312US02D	CABLE LL10MT WITH USA PLUG
8	154ES09D	LEFT ARTICULATED JOINT FOR HANDLE	11/4	320GH04C	RING NUT FOR CABLE BS11
9	154ES10D	RIGHT ARTICULATED JOINT FOR HANDLE	11/5	264PC01D	SWITCH HOLDER WITH BASE
10	158GB06D	RING NUT DIAM. 91MM	11/6	320PG01C	SHEATH TERMINAL 12X16 3/8" GAS
11	235ES01A	STARTER WITH CE PLUG (230V/50HZ)			BELT TIGHTENER SPARE PARTS
11	235ES02A	STARTER WITH US PLUG (115V/60HZ)	42	399LA12A-ADV	COMPLETE BELT TIGHTENER
12	261RA04D	GEAR WHEEL Z55	42/1	399LA12D	BELT TIGHTENER
13	266FE03D	MOTOR CASING	42/2	399IN02D	ST. STEEL RUBBER PLUG HOLDER
14	284GC02D	GUIDE PULLEY Z12	42/3	141FU03D	OLEOTEN RUBBER PLUG 398 MM
15	284PG03D	PINION Z14	42/4	141FU01D	WATER SEALING PLUGS 24X120MM
16	284PS02D	PINION Z11	42/5	399IN04D	ST. STEEL PLUG HOLDERS
17	285BERTA-05	3/8 CHAIN WITH 94 ROLLERS			MOTOR SPARE PARTS
18	297IN18D	MOTOR 230V-50/60HZ	18	297IN18D	MOTOR 230V-50/60HZ
18	297IN19D	MOTOR 115V-50/60HZ	18	297IN19D	MOTOR 115V-50/60HZ
19	300EP01D	EPICYCLOID REDUCTION GEAR	18/1	281LG03D	MEC ROTOR 56 0.12KW
20	305MF01C	HANDLE LL55 M8	18/2	3045601C	FAN COVER MEC 56
21	305PF01D	KNOB DIAM. 22	18/3	303VM25C	FAN MEC56
22	306IP03C	HANDGRIP	18/4	247CM13C	TERMINAL BOARD COVER MEC 56
23	310BS15D	BUSHING O.D. 14 HOLE DIAM. 6 H16.5	18/5	279IN03C	MOTOR SHIELD MEC 56
24	314TO03D	TORSION SPRING, H.D. 2.7 P.D. 20 LL5	18/6	279IN02C	FLANGE MEC 56
25	314TO06D	TORSION SPRING, H.D. 2.7 P.D. 20 LL84	18/7	320PR01C	CABLE LUG PG11
26	315CB01D	WHEEL O.D.50X53 H.D. 8	18/8	177CO03C	SEAL 12X22X5
27	315CB16A	IDLE ROLLER	18/9	3081201C	BEARING 6201ZZ
28	317RU04D	PIN FOR IDLE ROLLER, DIAM. 15 LL394			230 V MOTOR SPARE PARTS
29	320GH01C	RING NUT 12X16 3/8" GAS	18/10	280AA06C	STATOR MEC 56 0.12KW 230V
30	320PG01C	SHEATH TERMINAL 12X16 3/8" GAS	18/11	2870801C	CAPACITOR 8 MF
31	326BE01A	COMPLETE TANK ASSEMBLY			115 V MOTOR SPARE PARTS
32	380ANTISC	TIN OF ANTI-FOAM AGENT 100 GR.	18/10	280CA06C	STATOR MEC 56 0.12KW 115V
33	380RULLO	AVANA SPONGE ROLLER	18/11	2873001C	CAPACITOR 30 MF
34	399ES01D	ALUMINIUM MOTOR SUPPORT			
35	399ES02D	ALUMINIUM CROSSBAR			
36	399FA01A	LEFT HAND SIDE PANEL			
37	399FA02A	RIGHT HAND SIDE PANEL			
38	399KR01A	WHEEL KIT WITH PIN			
38/1	317PR02D	WHEEL PIN DIAM. 15 LL445			
38/2	315CR05C	WHEEL O.D. 100X44 H.D. 15			
39	399LA08D	BUMPER			
40	399LA09D	LEFT HAND TANK GUIDE			
41	399LA11D	RIGHT HAND TANK GUIDE			
42	399LA12A-ADV	COMPLETE BELT TIGHTENER			
43	399LA13D	RH BRACKET FOR ADJUSTER LEVER			
44	399LA14D	LH BRACKET FOR ADJUSTER LEVER			
45	399LA16D	ANTI-FOAM TIN HOLDER			
46	399RM02A	MOTORISED ROLLER WITH PIN			
47	399RS02A	SQUEEZER ROLLER WITH SUPPORT			
48	399SM01A	MAGNETIC RELEASING DEVICE FOR DRIVE PIN			
49	399SM02A	MAGNETIC RELEASING DEVICE FOR IDLE PIN			

AFFRANCARE



Via dei Tipografi, 11

41100 MODENA (ITALY)



**CERTIFICATO DI
GARANZIA**

B	GARANZIA	MODELLO:	N° DI SERIE
		BERTA ADV	□ □ □ □ □ □ □ □
ACQUIRENTE _____			
VIA _____			
C.A.P. □ □ □ □ □ CITTÀ _____ ()			
TELEFONO _____			
ATTIVITÀ: <input type="checkbox"/> PAVIMENTATORE <input type="checkbox"/> MURATORE <input type="checkbox"/> IMPRESA EDILE <input type="checkbox"/> ALTRO _____			
DATA D'ACQUISTO		NOME INDIRIZZO E TIMBRO RIVENDITORE	
□ □ □ □ □ 2 0 □ □ □ □		<div style="border: 1px solid black; width: 100%; height: 100%;"></div>	
<p>I dati sono inseriti nelle nostre liste al fine di potere inviare materiale informativo o promozionale. In ogni momento, a norma dell'art.13 legge 675/96, potrà avere accesso ai suoi dati, chiederne la modifica o la cancellazione oppure opporsi al loro utilizzo scrivendo a: RAIMONDI S.p.A. via dei Tipografi, 11 - 41100 Modena (MO).</p>			
DA SPEDIRE INTEGRALMENTE COMPILATA ENTRO 10 GIORNI DALLA DATA D'ACQUISTO			



A	GARANZIA	MODELLO:	N° DI SERIE
	DA ESIBIRE AL TECNICO	BERTA ADV	□ □ □ □ □ □ □ □
ACQUIRENTE _____			
VIA _____			
CITTÀ _____ ()			
DATA D'ACQUISTO □ □ □ □ □ 2 0 □ □ □ □			
RIVENDITORE: _____			
Clausole di garanzia:			
<ol style="list-style-type: none"> 1) L'apparecchio è garantito per un periodo di 12 mesi dalla data di acquisto. 2) Quale data di acquisto vale quella indicata sulla ricevuta fiscale rilasciata al momento della consegna dell'apparecchio da parte del rivenditore. 3) Ogni garanzia decade se la parte B non risulta compilata integralmente e se viene spedita dopo 10 giorni dalla data di acquisto (data del timbro postale). 4) Per garanzia si intende la sostituzione o riparazione gratuita dei componenti riconosciuti difettosi di fabbricazione. 5) La sostituzione di componenti se effettuata dal rivenditore verrà riconosciuta gratuita dopo che i componenti sostituiti saranno rientrati c/o la nostra sede per essere esaminati e riconosciuti difettosi. Le spese di mano d'opera non sono comprese nella garanzia. 6) Tutte le spese di trasporto sono a carico dell'acquirente. 7) Sono escluse dalla garanzia: le parti soggette a usura. I danni provocati da incuria, uso ed installazione impropri e comunque da fenomeni non dipendenti dal normale funzionamento dell'apparecchio. 8) La garanzia decade se l'apparecchio è stato manomesso o riparato da personale non autorizzato. 9) E' esclusa la sostituzione dell'apparecchio ed il prolungamento della garanzia a seguito di intervento guasto. 10) Nessuno è autorizzato a modificare i termini di garanzia o rilasciare altre, verbali o scritte, senza l'autorizzazione scritta della sede. 11) E' escluso il risarcimento di danni diretti od indiretti di qualsiasi natura a persone o cose per l'uso o la sospensione d'uso dell'apparecchio. 			

Date of production	□ □ □ / □ □ □ / □ □ □
--------------------	-----------------------

Serial n°	□ □ □ □ □ □ □ □
-----------	-----------------