

RACATAC OWNERS' MANUAL

CONGRATULATIONS on choosing the RACATAC. With proper use, care, and maintenance, this tool will increase speed, safety, and comfort on those tedious kneeling jobs for years to come. In developing the RACATAC, I focused on producing a high quality tool that supports the body and enables you to work in a kneeling position. Read the owners manual thoroughly and learn how easy it is to use and benefit from the RACATAC.

Sincerely,
Craig Comeaux
RACATAC PRODUCTS, INC.

CAUTION: Read all safety precautions and instructions in this owner's manual before using this equipment. Save this manual for future reference.

PRODUCT SPECIFICATIONS ---- LENGTH: 20" • WIDTH: 19.5" • HEIGHT: 11.5" to 15.5"
WEIGHT: 8 Lbs. • MAX. USER WEIGHT: 300 Lbs.

ASSEMBLY INSTRUCTIONS: The RACATAC is assembled, except for seat and post. (See Figure A). Place seat post with curved end and snap button through top of frame tube until snap button locks in place. Place seat and seat clamp over square end of seat post and tighten with 9/16 wrench. **IMPORTANT: When placing seat clamp over seat post make sure that the round part of the clamp that has the sticker (THIS SIDE TOWARDS REAR) is facing towards the rear of the seat.** The adjustment screw and nuts will be towards the front of the seat. This is necessary to maintain balance when sitting on the seat.

PROPER USE: When mounting RACATAC, stand behind and over the seat, slowly bend both knees directly into corresponding kneepads, then sit. If you wish to work on one knee, place one foot next to outside of kneepad. Be sure that you keep your weight directly on the RACATAC. **WARNING: Leaning too much forward, sideward or backward may cause lifting or tilting. Always use on clean and level surfaces!!!** While on two knees, you may use your feet and toes to maneuver. For quick and far movement, lift one knee up and use your leg and feet to maneuver. When dismounting, lift one knee out of kneepad, then simultaneously lift yourself off of seat, then out of other pad.

FIGURE A

**VIEW RACATAC PARTS LIST
ON MANUAL PAGE**

SEAT ADJUSTMENTS: (See Figure A) Adjustments are made by using the adjustment screw and bolt on the seat clamp below the seat. Using a 9/16 wrench, loosen screw on seat clamp. This will enable you to move the seat up or down to an extent. This will also enable you to adjust the seat 3" horizontally along the seat rail and tilt it up or down. Adjust seat to approximate position and tighten adjustment screw. Try the position you selected. For quick height adjustments there are three settings on the frame tube. Press snap button firmly and slightly twist and move post to the setting you prefer. Repeat this process until you find the most comfortable working position. You may cut 1" off of top of seat post to attain an even lower seat height.

INSPECTION & MAINTENANCE: Before using the RACATAC, be sure to make the following inspection:

- Make certain that seat is properly adjusted and adjustment screw and bolt are tight.
- Be sure snap button is locked in place.
- Check that all casters are fastened securely.
- Periodically clean and oil ball bearings on casters, (more frequently for users of floor industry).

ORDERING REPLACEMENT PARTS: Replacement parts can be ordered by calling toll-free 1-877-RACATAC Monday-Friday, 8 a.m. – 4 p.m. When ordering parts, please give the following information:

- The MODEL NAME of product.
- The PART NUMBER (from page 3).
- The DESCRIPTION of the part (from page 3).
- QUANTITY needed and HOW TO SHIP.

PRODUCT SPECIFICATIONS

RACATAC SPECIFICATIONS:

Weight – 8.5 Lbs • Weight Capacity – 300 lbs.
Outside Dimension 19 ½”x20”.

FRAME:

Made of 1/8” thick industrial strength aluminum •
Curved design allows you to maneuver easily with
your feet to reach tools, materials or work areas.

SEAT:

Comfortable websping seat with soft leather
imitation cover • Adjusts vertically 11 ½” to 15 ½”
in height • Adjusts 3” horizontally and tilts for
your utmost comfort • Seat and post detaches
easily for convenient storage.

Chest Support:

Fully adjustable and comfortable dual
density foam that conforms to the angle and
height needed to perform low lying tasks.
Connects and disconnects quickly.

KNEEPADS:

Thick foam inner pads for all day comfort and
protection • Attached to a soft rubber and rigid outer
shell designed for professional use.

WHEELS:

2” or 3” red polyurethane ball bearing casters

TRAY:

7” X 15” removable tray, handy for tools and parts.

11”X 13” DOLLIES AND 11” X 24” DOLLIES

Weight Capacity: 320 LBS.

Frame: 1/8” aluminum

Wheels: 2” black polypropylene

REPLACEMENT PARTS:

All parts are stock items and can be shipped
next day by calling our toll free number:
1-877-RACATAC

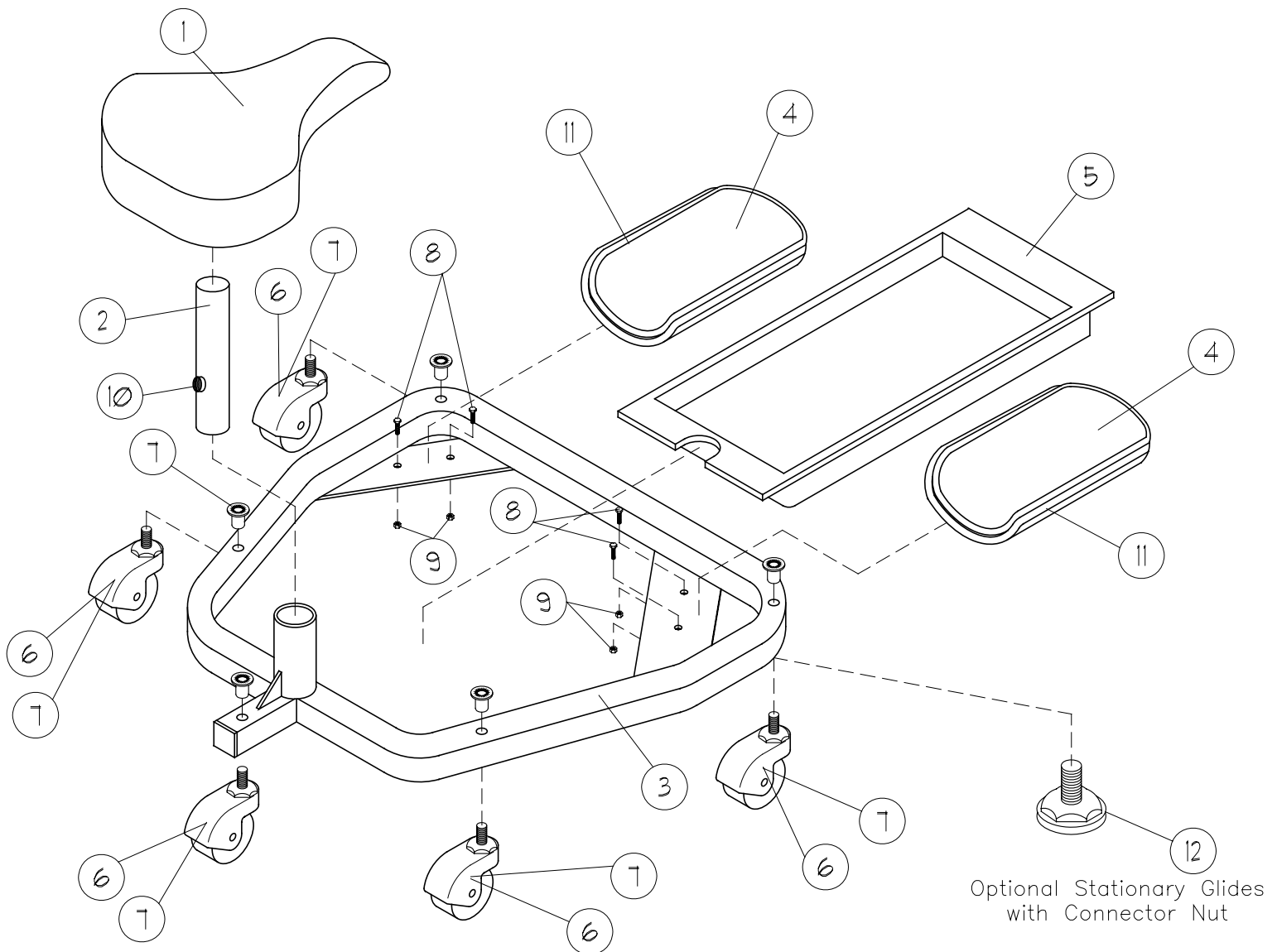
Warranty:

Limited one year warranty

RACATAC™ PRODUCTS INC.

PARTS LIST

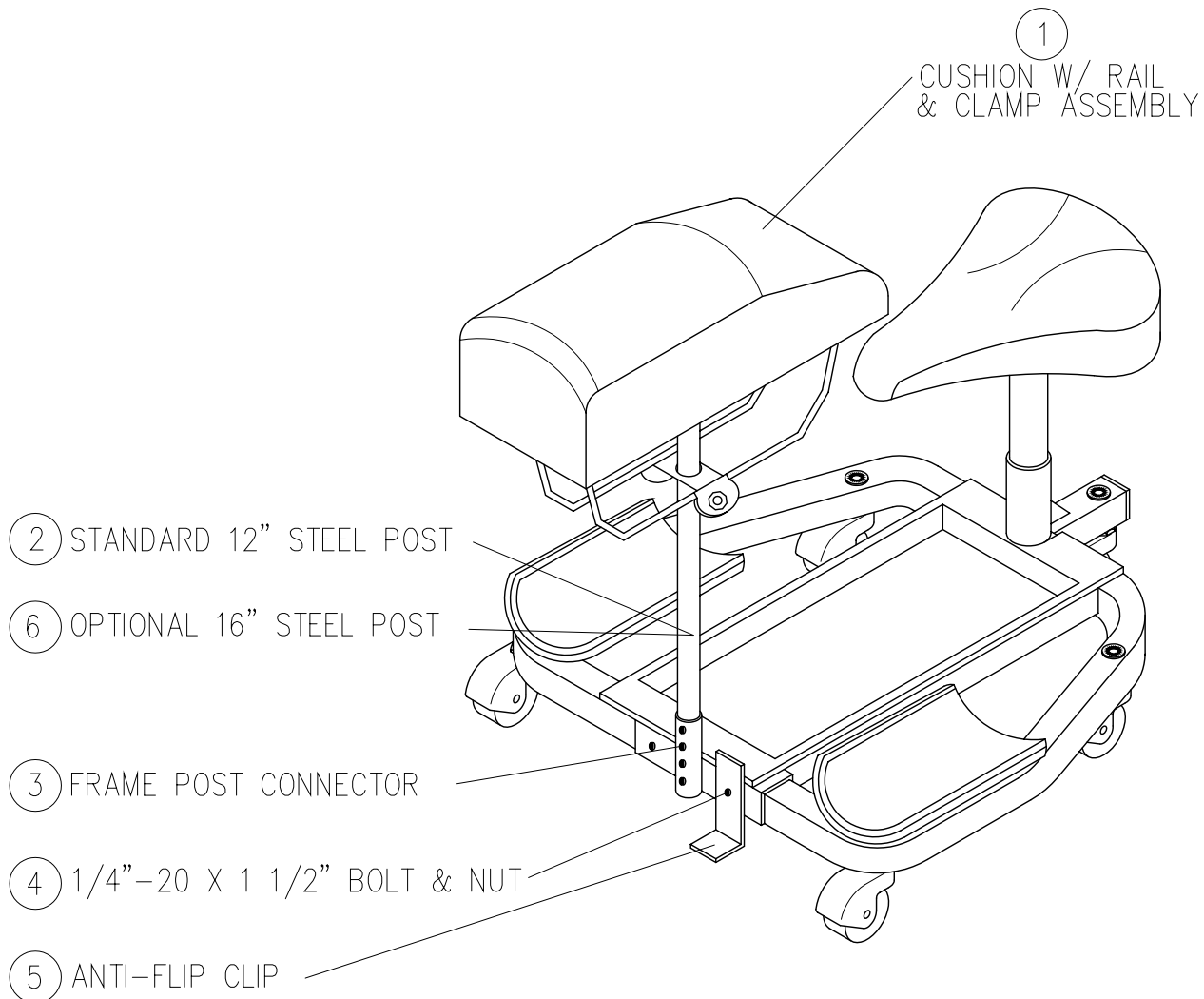
ITEM NO.	PART NO.	QTY.	DESCRIPTION
1	R1001	1	Seat with clamp assembly
2	R1002	1	Post with snap button
3	R1003	1	Frame
4	R1004	2	Foam Kneepad Replacement
5	R1005	1	Tray
6	R1006	5	2" Dia. Casters w/ Connector Nut
7	R10063	5	3" Dia. Casters w/ Connector Nut
8	R1008	4	8-32 x 1/2 RHM screw
9	R1009	4	8-32 nylon insert locknut
10	R1010	1	Snap Button Only
11	R1011	2	Complete Kneepad Assembly
12	R1012	5	Stationary Glides with Connector Nuts



RACATAC™ PRODUCTS INC.

CHEST SUPPORT PARTS LIST

ITEM NO.	PART NO.	QTY.	DESCRIPTION
1	RCS01	1	Cushion w/ Rail & Clamp
2	RCS02	1	Standard 12" Steel Post
3	RCS03	1	Frame - Post Connector
4	RCS04	2	1/4" - 20 x 1 1/2" Bolt & Nut
5	RCS05	1	Anti - Flip clip
6	RCS06	1	Optional 16" Steel Post



MANUFACTURERS LIMITED WARRANTY

RACATAC™ PRODUCTS, INC. (warrantor) warrants this RACATAC™ to be free from defects in material and workmanship for a period of one year from date of sale to original purchaser. Caster wheels are not included in warranty. This warranty does not include any damages which may occur through misuse, accidents, improper operation, normal wear, shipping, or unauthorized repair made or attempted.

In the event of failure of this product to confirm to its warranty during the warranty period, you must return this product to the location shown below at your own expense. RACATAC™ PRODUCTS, INC. will replace or repair, at its own option, the product or any covered part, except that this warranty does not cover. This warranty is not transferable. Return of the registration form within 10 days is necessary to receive warranty coverage. Incidental or consequential damages such as phone calls, loss of time, transportation, or commercial loss are not covered within this limited warranty.

In order to obtain service under this warranty, use the following procedure:

- 1. Send the defective part to:
 - Attn: Customer Service
 - c/o Racatac Products, Inc.
 - 3229 West Gloria Switch
 - Church Point, LA 70525
- 2. Be sure to include:
 - Your legible address
 - A daytime telephone number
 - A brief statement
 - Copy of proof of purchase

There are no warranties which extend beyond the face hereof. There is no implied warranty merchantability except as stated herein. Some states do not allow limitations on how long an implied warranty lasts, or the exclusion or limitations of incidental or consequential damages, so the above limitation or exclusion may not apply to you.. This warranty gives you specific legal right, you may also have other rights which vary from state to state.

This is the only express warranty authorized by RACATAC™ PRODUCTS INC.

LIMITED WARRANTY REGISTRATION FORM

IMPORTANT- Please fill out and mail to: RACATAC Products, Inc., 3229 West Gloria Switch, Church Point, LA 70525 within ten days from date of purchase.

NAME: _____

ADDRESS: _____

PHONE : _____ DATE OF PURCHASE: _____

PLACE OF PURCHASE: _____

MODEL NAME: _____