



DUOSCREEED™

**Form-to-form
and wet screeding
with one machine**



DuoScreed

Multiquip's DuoScreed utilizes a unique blade profile that enables one person to strike-off concrete floors. The screed's vibratory action embeds aggregate and reduces air voids, producing a strong, dense slab, while eliminating the strenuous, time-consuming labor of manual screeding.

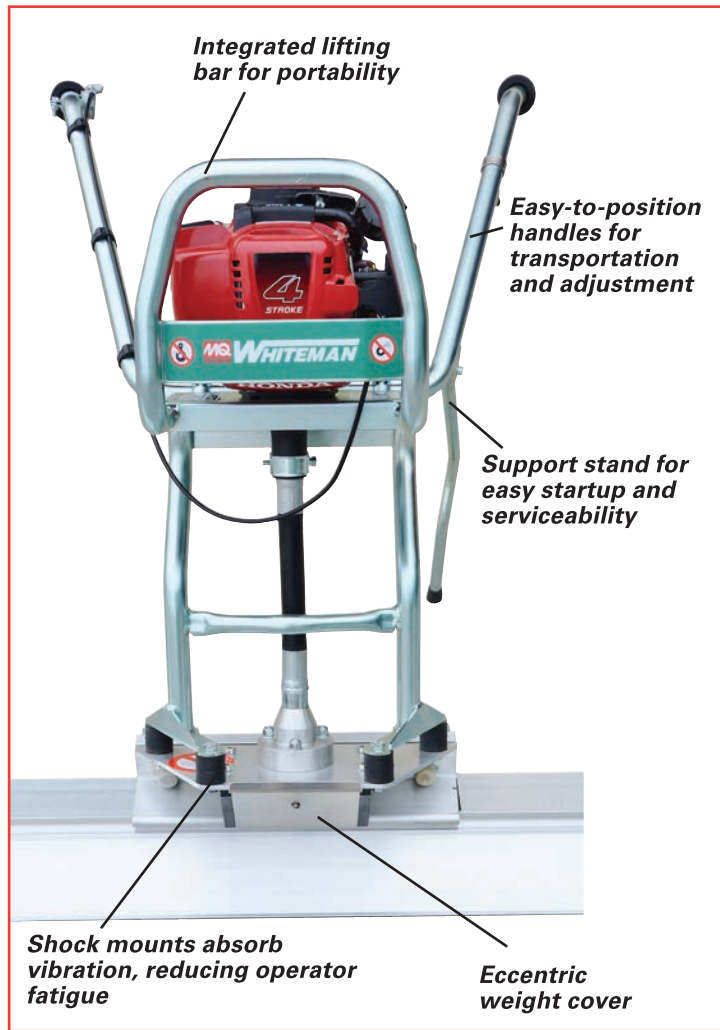
The DuoScreed is ideal for a wide range of applications. Unlike competitive designs (which require different blades for each application), the DuoScreed uses a unique reversing blade. Simply adjusting the operator handles up or down allows for the usage of either the curved form-to-form edge or the wet-screeding edge. Reference our instructional video at Multiquip.com for further information.

- **Flexible drive shaft** requires no maintenance. Its straight design eliminates undesired wear.
- **Fingertip throttle control** adjusts vibrator speed.
- **Blade options available** in sizes from 6 to 16 feet total length.
- **Lightweight blade construction** — one-piece extruded aluminum, less than two pounds per linear foot.
- **Easy to use** — highly maneuverable around pipes or obstructions.
- **Adjustable operator's handle** — position handle at waist height to utilize the form-to-form edge. Position handle at knee height before lifting for operation to utilize wet-screed edge.
- **Portable design** — the blade is quickly removed without tools; handles fold for storage.
- **Honda powered** — 1.5 HP four-stroke engine

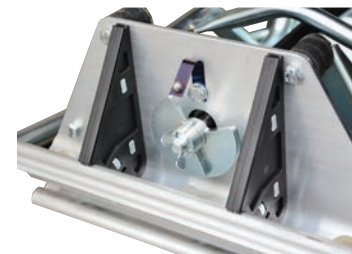
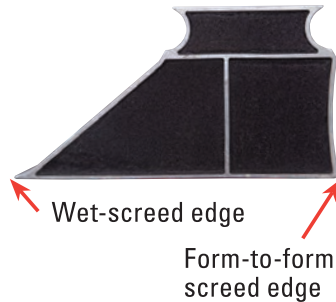
Specifications

Model	DSGPULW
Blade widths (ft.)	6, 8, 10, 12, 14, 16
Blade construction.....	Aluminum
Engine.....	Honda GX-35SAT
HP (kW)	1.3 (1.0)
Drive system	Flexible shaft
Power Unit weight.....	32 lb.

* Engine power ratings are calculated by the individual engine manufacturer and the rating method may vary among engine manufacturers. Multiquip Inc. and its subsidiary companies makes no claim, representation or warranty as to the power rating of the engine on this equipment and disclaims



Extruded aluminum blade features a design that easily clamps on the power unit with no tools required.



Eccentric weight cover requires no tools to remove. Weights adjust for larger or smaller blades

© COPYRIGHT 2016, MULTQUIP INC.

any responsibility or liability of any kind whatsoever with respect to the accuracy of the engine power rating. Users are advised to consult the engine manufacturer's owners manual and its website for specific information regarding the engine power rating.

Your Multiquip dealer is:

