



# HYDRO BAN® Preformed Shelf

DS-066.0-0414

**Globally Proven  
Construction Solutions**



## 1. PRODUCT NAME

HYDRO BAN® Preformed Shelf

## 2. MANUFACTURER

LATICRETE International, Inc.  
1 LATICRETE Park North  
Bethany, CT 06524-3423 USA

Telephone: +1.203.393.0010, ext. 235

Toll Free: 1.800.243.4788, ext. 235

Fax: +1.203.393.1684

Internet: [www.laticrete.com](http://www.laticrete.com)

## 3. PRODUCT DESCRIPTION

HYDRO BAN Preformed Shelf is a component of the expanded HYDRO BAN® line of waterproofing products that allow for high quality rapid shower installations. The HYDRO BAN Preformed Shelf is made from high-density expanded polystyrene with a waterproof finish. The HYDRO BAN Preformed Shelf is 100% waterproof and ready-to-tile.

**Materials:** Polymer fortified thin-set and HYDRO BAN Adhesive & Sealant.

### Advantages

- Lightweight and durable easy to transport, handle and adjust during installation
- Factory installed, code approved waterproofing meets ANSI A118.10 requirements
- Ready to tile
- Multiple design options and sizes available adding utility and value to the shower installation
- Component of LATICRETE® Lifetime Tile & Stone System Warranty\* Single source responsibility
- Works in conjunction tile and stone installation materials

### Uses

- Interior and exterior use
- Fountains and water features
- Shower stalls and tub surrounds
- Industrial, commercial and residential

### Suitable Substrates

- Cement Backer Board \*\*
- Lightweight Wall Board

- Ceramic Tile Or Stone

\*\* Consult cement backer board manufacturer for specific installation recommendations and to verify acceptability for exterior use.

### Packaging

All HYDRO BAN Preformed Shelves are 2" (50mm) thick

7" x 7" (18 cm x 18 cm) Triangle

9" x 9" (23 cm x 23 cm) Triangle

11" x 11" (28 cm x 28 cm) Triangle

11" x 11" (28 cm x 28 cm) Convex Triangle

### Limitations

- Adhesives/mastics, mortars and grouts for ceramic tile, pavers, brick and stone are not replacements for waterproofing membranes. When a waterproofing membrane is required, use HYDRO BAN.
- Do not expose unprotected HYDRO BAN Preformed Shelf to sun or weather for more than 30 days.
- Do not expose to rubber solvents or ketones.
- Must be covered with ceramic tile, stone, finish.
- The HYDRO BAN Preformed Shelf is NOT a seat and is not meant to hold more than 10 lbs. (4.5 kg).
- Do not install the HYDRO BAN Preformed Shelf lower than 30" (76 cm) high.

*Note: Surfaces must be structurally sound, stable and rigid enough to support ceramic/stone tile, thin brick and similar finishes. Substrate deflection under all live, dead and impact loads, including concentrated loads, must not exceed L/360 for thin bed ceramic tile/brick installations or L/480 for thin bed stone installations and L/600 for all exterior veneer applications where L=span length.*

### Cautions

Consult MSDS for more safety information.

- During cold weather, protect finished work from traffic until fully cured.
- For white and light-colored marbles, use a white Latex Portland Cement Thin Set Mortar.
- For green and moisture sensitive marble, agglomerates and resin backed tile and stone use LATAPOXY® 300 Adhesive (refer to DS 633.0).
- If the waterproof coating on the HYDRO BAN Preformed Shelf is punctured during installation or from job site construction activity recoat the punctured area and 2" (50 mm) around the area with two coats of HYDRO BAN, follow DS 663.0 and DS 663.5 for full instructions.

## 4. TECHNICAL DATA

Waterproofing membrane meets ANSI A118.10.

## 5. INSTALLATION

## Preparatory Work

- The HYDRO BAN® Preformed Shelf should be installed prior to the waterproofing application.
- The shower should then be waterproofed in accordance with Tile Council of North America (TCNA) guidelines, LATICRETE® installation instructions and all other applicable local codes. Follow DS 663.0 and DS 663.5 instructions to use HYDRO BAN as the waterproofing membrane.
- Ensure that walls are square and plumb for proper fit of the HYDRO BAN Preformed Shelf.
- The HYDRO BAN Preformed Shelf is made with a tenon on the sides that are attached to the wall board. Cut the wallboard to form a mortise so that the tenon fits snugly into the wall board.
- Test fit the HYDRO BAN Preformed Shelf to ensure proper fit against the wall board. Adjust as necessary. Add a slight pitch to the top of the shelf when installing tile or stone in order to prevent water puddling.

## Installation

- Apply HYDRO BAN Adhesive & Sealant on the top and bottom of the HYDRO BAN Preformed Shelf tenon. Press the HYDRO BAN Preformed Shelf into the mortise cut into the wall board. Make sure that the HYDRO BAN Preformed Shelf is level and square to the wall board. Scrape away any excess HYDRO BAN Adhesive & Sealant that has oozed out from the mortise and tenon joint formed from the HYDRO BAN preformed Shelf and wall board. When the HYDRO BAN Adhesive & Sealant has dried to the touch (approximately 40 minutes) the shower should then be waterproofed in accordance with Tile Council of North America (TCNA) guidelines, LATICRETE installation instructions and all other applicable local codes. Follow DS 663.0 and DS 663.5 instructions to use HYDRO BAN as the waterproofing membrane.
- Install tile according to TCNA guidelines and LATICRETE installation instructions using 254 Platinum.

## See The Details Below For The Following Applications:

- HYDRO BAN Preformed Shelf over the cement or lightweight wall board (see ES- W244).

## 6. AVAILABILITY AND COST

### Availability

LATICRETE and materials are available worldwide.

### For Distributor Information, Call:

Toll Free: 1.800.243.4788  
Telephone: +1.203.393.0010

For on-line Distributor information, visit LATICRETE at [www.laticrete.com](http://www.laticrete.com).

**Cost** Contact a LATICRETE Distributor in your area.

## 7. WARRANTY

See 10. FILING SYSTEM:

DS 230.13: LATICRETE Product Warranty (United States and Canada)

A component of:

DS 230.10APD: LATICRETE 10 Year Tile & Stone System Warranty (United States and Canada)

DS 025.0APD: LATICRETE 25 Year Tile & Stone System Warranty (United States and Canada)

DS 230.99: LATICRETE Lifetime Tile & Stone System Warranty (United States and Canada)

## 8. MAINTENANCE

LATICRETE and LATAPOXY® grouts require routine cleaning with a neutral pH soap and water. All other LATICRETE and LATAPOXY materials require no maintenance but installation performance and durability may depend on properly maintaining products supplied by other manufacturers.

## 9. TECHNICAL SERVICES

### Technical Assistance

Information is available by calling the LATICRETE Technical Service Hotline:

Toll Free: 1.800.243.4788, ext. 235  
Telephone: +1.203.393.0010, ext. 235  
Fax: +1.203.393.1948

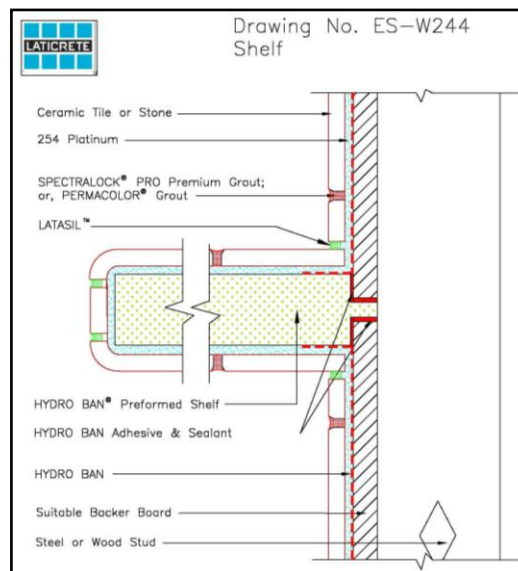
### Technical and Safety Literature

To acquire technical and safety literature, please visit our website at [www.laticrete.com](http://www.laticrete.com).

## 10. FILING SYSTEM

Additional product information is available on our website at [www.laticrete.com](http://www.laticrete.com). The following is a list of related documents:

DS 230.13:	LATICRETE Product Warranty (United States and Canada)
DS 230.10APD:	LATICRETE 10 Year Tile & Stone System Warranty (United States and Canada)
DS 025.0APD:	LATICRETE 25 Year Tile & Stone System Warranty (United States and Canada)
DS 230.99:	LATICRETE Lifetime Tile & Stone System Warranty (United States and Canada)
DS 663.0:	HYDRO BAN
DS 108.0:	HYDRO BAN Adhesive and Sealant
DS 080.0:	4-XLT
DS 677.0:	254 Platinum
DS 255.0:	255 MULTIMAX™
DS 633.0:	LATAPOXY 300 Adhesive



LATICRETE International, Inc.  
One LATICRETE Park North, Bethany, CT 06524-3423 USA • 1.800.243.4788 • +1.203.393.0010 • [www.laticrete.com](http://www.laticrete.com)

©2014 LATICRETE International, Inc.  
All trademarks shown are the intellectual properties of their respective owners.