



HYDRO BAN® Bonding Flange Drains

DS-035.0-0314

**Globally Proven
Construction Solutions**



1. PRODUCT NAME

HYDRO BAN® Bonding Flange Drain
HYDRO BAN Bonding Flange Tile Drain

2. MANUFACTURER

LATICRETE International, Inc.
1 LATICRETE Park North
Bethany, CT 06524-3423 USA

Telephone: +1.203.393.0010, ext. 235
Toll Free: 1.800.243.4788, ext. 235
Fax: +1.203.393.1684
Website: www.laticrete.com

3. PRODUCT DESCRIPTION

HYDRO BAN Bonding Flange Drain and the HYDRO BAN Bonding Flange Tile Drain are low profile floor drains specifically designed for bonded waterproofing installations with HYRDO BAN waterproofing membrane. HYDRO BAN Bonding Flange Drains allow for the installation in a shower eliminating the pre-slope and primary shower pan liner according to TCNA B422.

Uses

- Interior applications only
- Showers
- Commercial and residential bathrooms and laundries
- Kitchens and food processing areas

Advantages

- Attaches to 2" (50 mm), 3" (76 mm) and 4" (102 mm) waste lines
- Tile-in grate available to match floor tile
- Eliminates pre-slope and primary shower pan for a faster installation
- Made from heavy duty PVC or ABS and 304 stainless steel to provide long lasting performance
- HYDRO BAN waterproof membrane bonds directly to PVC or ABS flange
- Integrates seamlessly with portland cement mortar beds waterproofed with HYDRO BAN

Suitable Substrates

- Concrete
- Exterior glue plywood (interior only)
- Cement backer board
- Cement mortar beds

Packaging

The HYDRO BAN Bonding Flange Drain is a three piece drain flange, adjusting ring and a 5" x 5" (127 x 127 mm) grate assembly in brushed, polished or oil rubbed bronze stainless steel.

The HYDRO BAN Bonding Flange Tile Drain is a four piece drain flange, adjusting ring and a 5" x 5" (127 x 127 mm) grate assembly that can be tiled to match the shower floor. All Bonding Flange Drains are available with either PVC or ABS Bonding Flange. When ordering a HYDRO BAN Bonding Flange Drain check with local code official to determine whether a PVC or ABS HYDRO BAN Bonding Flange Drain is required. Most areas in the United States will require a PVC drain connection except California and some surrounding states.

Limitations

Adhesives/mastics, mortars and grouts for ceramic tile, pavers, brick and stone are not replacements for waterproofing membranes. When a waterproofing membrane is required, use a waterproofing membrane (see Section 10 FILING SYSTEMS).

Note: Surfaces must be structurally sound, stable and rigid enough to support ceramic/stone tile, thin brick and similar finishes. Substrate deflection under all live, dead and impact loads, including concentrated loads, must not exceed L/360 for thin bed ceramic tile/brick installations or L/480 for thin bed stone installations where L=span length.

Cautions

Consult MSDS for more safety information.

During cold weather, protect finished work from traffic until fully cured.

4. TECHNICAL DATA

Applicable Standard

Code approval per ASME A 112.18-2-2005 / CSA B125.2.05 (US and Canada)

Working Properties

The HYDRO BAN Bonding Flange Drain and HYDRO BAN Bonding Flange Tile Drain series installs per TCNA B422 using HYDRO BAN as the waterproofing membrane.

5. INSTALLATION

Surface Preparation

All surfaces should be between 40°F (4°C) and 90°F (32°C) and structurally sound, clean and free of all dirt, oil, grease, laitance, paint, concrete sealers or curing compounds. Dry dusty concrete slabs or masonry should be dampened and excess water swept off. Installation may be made on a damp surface. Expansion joints shall be provided through the tile work from all construction or expansion joints in the substrate. Follow ANSI specification A108.01 – 3.7: Requirements for Movement Joints: Preparations by Other Trades” or TCNA detail EJ – 171 “Movement Joints – Vertical & Horizontal”. Do not cover expansion joints with mortar.

Bonded Mortar Bed—Installation

Before placing mortar, apply a slurry bond coat made from 254 Platinum or 4237 Latex Additive mixed with 211 Powder. While the slurry bond coat is wet, spread 3701 Fortified Mortar Bed and compact well. Mortar beds shall be 3/4" minimum to 2" (50 mm) maximum. Mortar beds in excess of 2" (50 mm) thick shall be detailed by the architect per TCNA F112-11. Prior to installing the HYDRO BAN® Bonding Flange Drain make sure the backer board has been installed on the walls following the manufacturer's recommendations. The HYDRO BAN Bonding Flange Drain should be installed per TCNA B422. Before installing the HYDRO BAN Bonding Flange Drains make sure the opening in the floor where the waste line connection is made is 4-1/4" (108 mm) in diameter. The lip of the HYDRO BAN Bonding Flange Drain should sit approximately 1-1/4" (32 mm) above the substrate. Dry fit the HYDRO BAN Bonding Flange Drain through the hole and to the waste line below. When connecting to a 2" (50 mm) waste line which is already in place the top of the waste line should be 1-3/4" (44 mm) below the surface of the substrate. Make sure that the HYDRO BAN Bonding Flange Drain is PVC when connecting to a PVC waste line or ABS when connecting to an ABS waste line. Cement the HYDRO BAN Bonding Flange Drain in place using PVC solvent and cement for PVC and ABS solvent and Cement for ABS HYDRO BAN Bonding Flange Drain and waste line connections. Make sure that the HYDRO BAN Bonding Flange is level before the PVC or ABS cement has cured. DO NOT MIX materials, this will cause a failure in the pipe weld. When installed over EGP the bonding flange (D) Fig 1 and 2 can be screwed to the substrate using stainless steel or zinc coated 3" (76 mm) drywall screws. There are four countersunk holes around the perimeter of the bonding flange (D) for this purpose. The installation is now ready to accept the mortar bed.

Mortar Bed—Installation Over Concrete (see ES-B422BFD Concrete Bonded and ES-B422BFD Concrete Unbonded)

For a bonded mortar bed over concrete installation, before placing mortar, apply a slurry bond coat made from 254 Platinum or 4237 Latex Additive mixed with 211 Powder. While the slurry bond coat is wet, spread 3701 Fortified Mortar Bed and compact well. Bonded mortar beds over concrete shall be 3/4"(19 mm) minimum to 2"(50 mm) maximum. For an unbonded installation over concrete (see ES-415BFD Concrete Unbonded) a cleavage membrane as specified in ANSI A108.02-3.8 should be used in place of the slurry bond coat. When using the unbonded method install the cleavage membrane prior to the HYDRO BAN Bonding Flange Drain installation. The 3701 Fortified Mortar Bed should be reinforced with 2" x 2" (50 x 50 mm) reinforcing mesh. Unbonded mortar beds over concrete shall be 1-1/4" (32 mm) minimum to 2" (50 mm) maximum. In both bonded and unbonded mortar bed installations place enough 3701 Fortified Mortar Bed under the HYDRO BAN Bonding Flange Drain to support

the flange of the drain. Minimum height from the flange to the substrate should be 1-1/4" (32 mm). Next place a ribbon of 3701 Fortified Mortar Bed along the opposite walls to create a 1/4" (6 mm) per foot slope to the HYDRO BAN Bonding Flange Drain. Fill the area between the drain and the walls with 3701 Fortified Mortar Bed; screed and compact well. Mortar beds in excess of 2" (50 mm) thick shall be detailed by the architect per TCNA F112-11.

Mortar Bed – Installation Over EGP (see ES-422BFD EGP Bonded and ES-422BFD EGP Unbonded)

For a bonded mortar bed over EGP installation, before placing mortar, install a cleavage membrane as specified in ANSI A108.02-3.8, expanded metal lath (minimum 2.5 pounds (1.1 kg)/square yard [0.84 square meters]) is then nailed or stapled to the subfloor over the cleavage membrane. The cleavage membrane and lath should be installed prior to the bonding flange (D) installation. Following the lath installation spread 3701 Fortified Mortar Bed and compact well. Bonded mortar beds over EGP shall be 3/4" (19 mm) minimum to 1 1/2" (38 mm) maximum. For an unbonded installation over EGP (see ES-422BFD EGP Unbonded) install a cleavage membrane as specified in ANSI A108.02-3.8 prior to the HYDRO BAN Bonding Flange Drain installation. For an unbonded mortar bed the 3701 Fortified Mortar Bed should be reinforced with 2" x 2" (50 x 50 mm) reinforcing mesh. In both bonded and unbonded mortar bed installations place enough 3701 Fortified Mortar Bed where the HYDRO BAN Bonding Flange Drain will be set to support under the flange of the drain. Minimum height from the flange to the substrate should be 1-1/4" (32 mm). Next place a ribbon of 3701 Fortified Mortar Bed along the opposite wall to create a 1/4" (6 mm) per foot slope to the HYDRO BAN Bonding Flange Drain. Fill the area between the drain and the walls with 3701 Fortified Mortar Bed; screed and compact well. Mortar beds in excess of 2" (50 mm) thick shall be detailed by the architect per TCNA F112-11.

Installing HYDRO BAN and Tile (Fig. 1 and Fig. 2)

1. Before applying HYDRO BAN make sure the bonding flange is clean and free of any mortar, thin-set, grease, dirt or finger prints that could cause debonding of the HYDRO BAN. Apply HYDRO BAN waterproofing membrane according to DS 663.0 and 663.5. Cover wall and mortar with two coats of HYDRO BAN. Apply two coats of waterproofing on top of the flange from the first vertical radius and onto the 3701 Fortified Mortar Bed. Alternatively Waterproofing Anti-Fracture Fabric can be imbedded into the HYDRO BAN around the bonding flange overlapping the flange and the 3701 Fortified Mortar Bed. DO NOT waterproof the inside flange walls and bottom after the first vertical radius.
2. When the second coat of HYDRO BAN is dry tile can be installed using a polymer fortified thinset and grouted with PERMACOLOR®^{®A} or SPECTRALOCK® PRO Premium Groutt.
3. Tile walls and floors; when thin-set and tile are ready to be installed around the HYDRO BAN Bonding Flange Drain comb thin-set onto bonding flange (D) and set top plate (C) onto the bonding flange. Thin-set should ooze through the triangle voids in the top plate (C). Scrape any excess thin-set from the top plate (C) using a trowel. As you tile closer to the top plate insert the threaded outlet of the top and bottom frame (A and B) into the top plate (C). Adjust the top and bottom frame by screwing in the threaded outlet to the top plate (C) to allow for height adjustment (fig. 2). Thin-set over the top plate (C) and install tile.
4. If using the tile-in grate with the HYDRO BAN Bonding Flange Drain, remove top frame (A) and prime surface with two coats of HYDRO BAN prior to installing tile within the frame using a

polymer fortified thin-set. Make sure that the stainless steel top frame (A) is free of grease, dirt or finger prints prior to applying the HYDRO BAN®.

- The finished floor must be 1/16" (1.5 mm) higher than the top and bottom frame (A and B with tile).

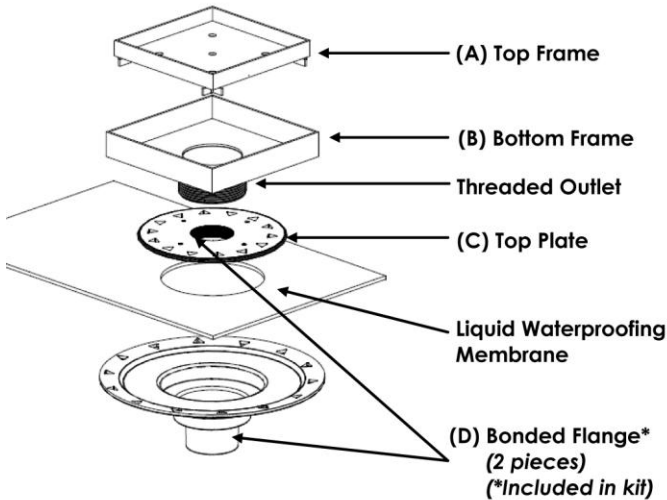


Fig. 1

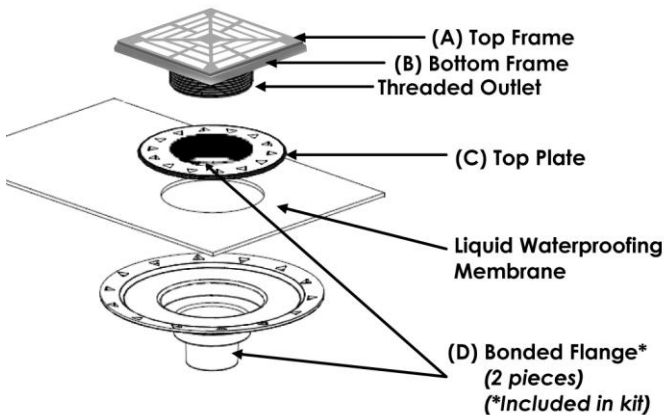


Fig. 2

Cleaning

Clean tools and tile work with water while the 3701 Fortified Mortar Bed and HYDRO BAN are fresh.

6. AVAILABILITY AND COST

Availability

LATICRETE® and LATAPOXY® materials are available worldwide.

For Distributor information:

Toll Free: 1.800.243.4788

Telephone: +1.203.393.0010

For online distributor information, visit LATICRETE at

www.laticrete.com.

Cost

Contact a LATICRETE Distributor in your area.

7. WARRANTY

See 10. FILING SYSTEM:

DS 230.13: LATICRETE Product Warranty (United States and Canada)

A component of

DS 230.10APD: LATICRETE 10 Year Tile & Stone System Warranty (United States & Canada)

DS 025.0APD: LATICRETE 25 Year Tile & Stone System Warranty (United States and Canada)

DS 230.99: LATICRETE Lifetime Tile & Stone System Warranty (United States and Canada)

8. MAINTENANCE

The non-finish or non-exposed portion of the LATICRETE Hydro Ban Shower System products require no maintenance. However, installation performance and durability may depend on properly maintaining products and finishes that cover the LATICRETE Hydro Ban Shower System products and those supplied by other manufacturers. The exposed portion of the stainless steel LATICRETE Hydro Ban Drains can be cleaned and maintained using a non-abrasive stainless steel cleaner or polish with a clean soft white cotton cloth. When cleaning the oil rubbed bronze drains use a non-abrasive cleaner and clean soft cloth. When cleaning the stainless steel or oil rubbed bronze drains contact the cleaner manufacturer if another cleaner type will be used to ensure compatibility with the drain material.

9. TECHNICAL SERVICES

Technical Assistance

Information is available by calling:

Toll Free: 1.800.243.4788, ext. 235

Telephone: +1.203.393.0010, ext. 235

Fax: +1.203.393.1948

Technical and Safety Literature

To acquire technical and safety literature, please visit our website at

www.laticrete.com.

10. FILING SYSTEM

Additional product information is available on our website at

www.laticrete.com. The following is a list of related documents:

DS 230.13: LATICRETE Product Warranty

DS 230.10APD: LATICRETE 10 Year Tile & Stone System Warranty (United States & Canada)

DS 025.0APD: LATICRETE 25 Year Tile & Stone System Warranty (United States and Canada)

DS 230.99: LATICRETE Lifetime Tile & Stone System Warranty (United States and Canada)

DS 100.0: 3701 Fortified Mortar Bed

DS 230.1: 4237 Latex Additive

DS 239.0: 211 Powder

DS 250.0: PERMACOLOR®A

DS 663.0: HYDRO BAN

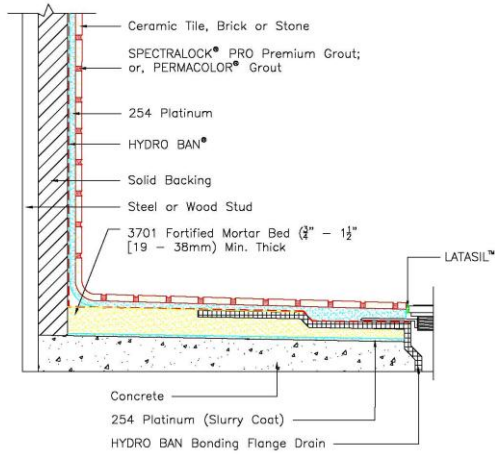
DS 677.0: 254 Platinum

DS 681.0: SPECTRALOCK® PRO Premium Grout†

DS 663.5: HYDRO BAN how to instructions



Drawing No. ES-B422BFD
Concrete – Bonded



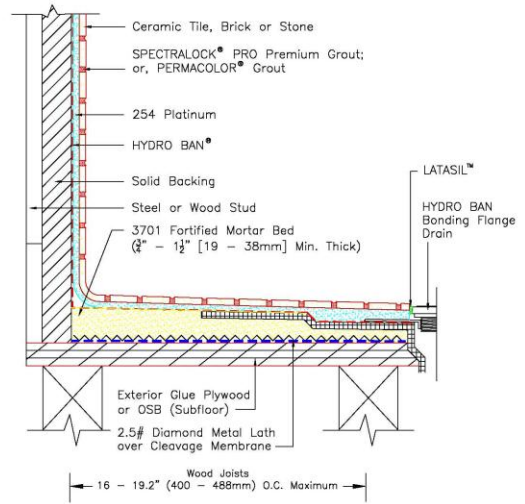
Revision Date: 10/13 Scale: N.T.S.

AS A PROFESSIONAL COURTESY, LATICRETE OFFERS TECHNICAL SERVICES FREE OF CHARGE. THE USER MAINTAINS ALL RESPONSIBILITY FOR VERIFYING THE ACCURACY AND RELIABILITY OF THE TECHNICAL SERVICE OR INFORMATION PROVIDED.

©2013 LATICRETE INTERNATIONAL, INC. ALL RIGHTS RESERVED. THE RIGHT TO UTILIZE, REPRODUCE, OR TRANSMIT THIS DOCUMENT, IN WHOLE OR IN PART, IS LIMITED TO THE USER. LATICRETE INTERNATIONAL, INC. IS A FOREIGN PATENT AND TRADEMARK OFFICE. TRADEMARKS AND OTHER TRADEMARKS ARE PROPERTY OF THEIR RESPECTIVE OWNERS.



Drawing No. ES-B422BFD
EGP – Bonded



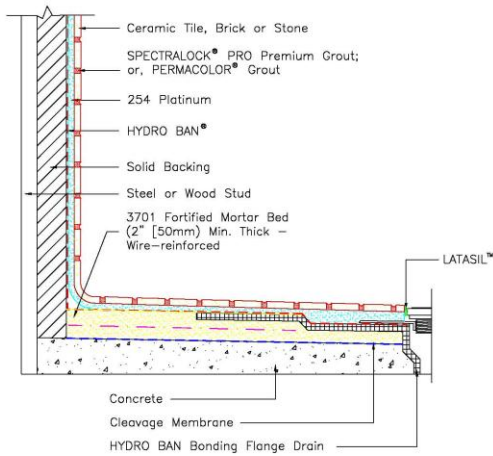
Revision Date: 10/13 Scale: N.T.S.

AS A PROFESSIONAL COURTESY, LATICRETE OFFERS TECHNICAL SERVICES FREE OF CHARGE. THE USER MAINTAINS ALL RESPONSIBILITY FOR VERIFYING THE ACCURACY AND RELIABILITY OF THE TECHNICAL SERVICE OR INFORMATION PROVIDED.

©2013 LATICRETE INTERNATIONAL, INC. ALL RIGHTS RESERVED. THE RIGHT TO UTILIZE, REPRODUCE, OR TRANSMIT THIS DOCUMENT, IN WHOLE OR IN PART, IS LIMITED TO THE USER. LATICRETE INTERNATIONAL, INC. IS A FOREIGN PATENT AND TRADEMARK OFFICE. TRADEMARKS AND OTHER TRADEMARKS ARE PROPERTY OF THEIR RESPECTIVE OWNERS.



Drawing No. ES-B422BFD
Concrete – Unbonded



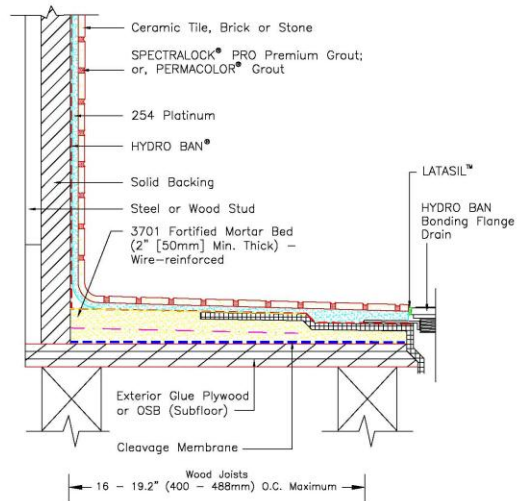
Revision Date: 10/13 Scale: N.T.S.

AS A PROFESSIONAL COURTESY, LATICRETE OFFERS TECHNICAL SERVICES FREE OF CHARGE. THE USER MAINTAINS ALL RESPONSIBILITY FOR VERIFYING THE ACCURACY AND RELIABILITY OF THE TECHNICAL SERVICE OR INFORMATION PROVIDED.

©2013 LATICRETE INTERNATIONAL, INC. ALL RIGHTS RESERVED. THE RIGHT TO UTILIZE, REPRODUCE, OR TRANSMIT THIS DOCUMENT, IN WHOLE OR IN PART, IS LIMITED TO THE USER. LATICRETE INTERNATIONAL, INC. IS A FOREIGN PATENT AND TRADEMARK OFFICE. TRADEMARKS AND OTHER TRADEMARKS ARE PROPERTY OF THEIR RESPECTIVE OWNERS.



Drawing No. ES-B422BFD
EGP Subfloor – Unbonded



Revision Date: 10/13 Scale: N.T.S.

AS A PROFESSIONAL COURTESY, LATICRETE OFFERS TECHNICAL SERVICES FREE OF CHARGE. THE USER MAINTAINS ALL RESPONSIBILITY FOR VERIFYING THE ACCURACY AND RELIABILITY OF THE TECHNICAL SERVICE OR INFORMATION PROVIDED.

©2013 LATICRETE INTERNATIONAL, INC. ALL RIGHTS RESERVED. THE RIGHT TO UTILIZE, REPRODUCE, OR TRANSMIT THIS DOCUMENT, IN WHOLE OR IN PART, IS LIMITED TO THE USER. LATICRETE INTERNATIONAL, INC. IS A FOREIGN PATENT AND TRADEMARK OFFICE. TRADEMARKS AND OTHER TRADEMARKS ARE PROPERTY OF THEIR RESPECTIVE OWNERS.

^ United States Invention Patent No.: 6784229 (and other Patents)

† United States Invention Patent No.: 6881768 (and other Patents)