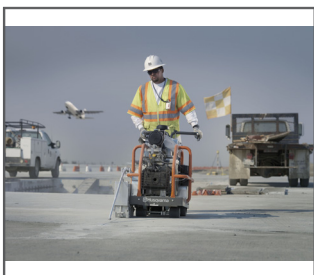




## Husqvarna Soff-Cut 2000

*A self-propelled dry-cutting gas saw ideal for medium to heavy-duty commercial, industrial and paving applications. The Husqvarna 2000 is designed for versatility, ease of use and high production capabilities. Three blade widths can be used, allowing for different joint widths and crack control simultaneously. Features include a 9 hp engine with automatic compression release for easy starting, chain driven overhead cam system, superior cooling, excellent lubrication system, and a cyclone air cleaner to increase engine longevity.*



### **SOFF-CUT™ TECHNOLOGY**

Husqvarna Soff-Cut is a unique patented system for early entry concrete sawing. This technology enables concrete to be cut within the first one or two hours of finishing and before final set. Husqvarna Soff-Cut™ provides the best solution for minimizing the risk of random cracking, and it simplifies the working process, compared to conventional sawing.

## Features Husqvarna Soff-Cut 2000

- Self-propelled gasoline saw with electric start engine and hydrostatic transmission.
- Electronic remote key start and choke.
- Patented low-noise and low-dust blade block enclosure.
- Built-in lifting system.
- Mechanical remote retractable guide.
- Roll cage frame.
- Mechanical depth control.
- Cyclonic air filter to increase engine longevity.
- Non-stick low-density polyurethane wheels.

TECHNICAL SPECIFICATION	
Motor manufacturer	Robin
Motor spec	Robin gasoline
Max output (As rated by the engine manufacturer)	6.5 kW / 9 hp
Cylinders	1
Number of strokes	4-stroke engine
Cylinder displacement	16.2 cu. inch
Cylinder bore	2.9 inch
Cylinder stroke	2.3 inch
Fuel tank volume	1.59 gal.
Starter	Electric
Engine cooling	Air
Number of belts	2
Displacement, l	265 lit
Oil capacity, l	1 lit
Output RPM	3600 rpm
Diamond blade, max	10"
Max cutting depth	1.5 inch
Blade depth control	Manual
Blade control	Manual
Blade shaft diameter	1.25 inch
Blade flange	4.25"
Blade shaft RPM	3600 rpm
Axle front	1 inch
Rear axle diameter	1 inch
Handle bars	Fixed
Primary wheel size	Outside diameter: 4 Wheel width: 4 Inner bore: 0"
Secondary wheel size	Outside diameter: 10 Wheel width: 3.625 Inner bore: 0"
Weight	317 lbs
Weight incl. packaging	388 lbs
Product size, LxVxH	94x29x34 inch

