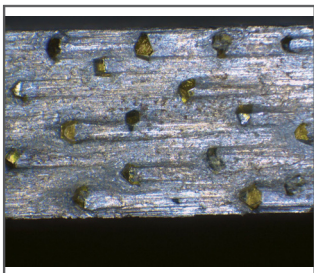


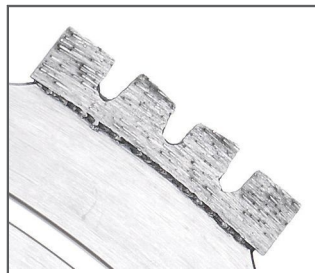
R 1245 Diagrip™ Ringsaw Blade

Diagrip™ technology which yields superior cutting capacity, longer life and a smooth rapid cut. Longer segments provide added stability to the ring, making it more solid and helping make straight cuts. The segment design improves cooling and slurry transportation, improving both blade life and speed. The self sharpening segments are designed for free-cutting regardless of direction of blade rotation. CE-certification applies only when using Husqvarna ring blades and drive disc together with Husqvarna ring saws. All ring saw blades are supplied with a patented drive disc.



DIAGRIP

Diagrip™ is a revolutionary new technology for producing diamond segments. The diamonds have a special treatment that ensures an optimal distribution. Also, the diamonds are held in the segment for longer, so they are utilised maximally. The result is blades with superior cutting capacity, longer life and a smooth, rapid cut.



R 1200 SEGMENT DESIGN

The design of the R 1200 segments promotes the efficient cooling of the segments and steel core, and helps to dispose of the abrasive saw slurry.

Features R 1245 Diagrip™ Ringsaw Blade

- The self-sharpening segments are designed to give a free-cutting tool, regardless of the direction of blade rotation.
- Unique segment design provides better stability for the ring. It makes the ring more solid and stiff, which facilitates straight cuts.
- Longer segment to give a better stability to the ring. Making it more solid and stiff which helps to cut a straight cut.
- The design of the segments improves cooling and slurry transportation, effecting both speed and life in a positive way.
- The self sharpen segments are designed to give a free-cutting tool regardless of direction of blade rotation.
- CE-certification applies only when using Husqvarna ring blades and drive disc together with Husqvarna ring saw.
- All ring saw blades are supplied with a patented drive disc.

TECHNICAL SPECIFICATION

Number of segments	18
Segment height	0.2"
Diamond depth	0.2"