



**Chicago  
Pneumatic**



**High-performance  
products.  
Designed for you!**

**Rock Drills, Rotary  
Hammers, Sinker Drills**



# Rotary Hammers, Hammer Drills

The CP range of compact and lightweight plughole drills includes tools capable of drilling holes from 8 up to 44 mm and for use in light chipping applications.

The CP 0009 is the “mother” of small rotary drills. It must be one of the most copied air tools available on the market because no other design could match such a performance for such a small, easy-to-use drill. This is a key product that has made Chicago Pneumatic the leading brand of air tools in the US.

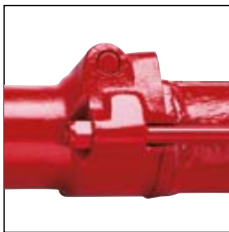
For applications where more power is needed, the CP 0014 would be the tool to use.

## CP 0009

- Excellent power-to-weight ratio to drill holes more easily and faster than with comparable electric rotary hammers
- Quick-release retainer for changing the drills simply and quickly to suit all different types of drilling and chipping applications
- Built-in oiler provides continuous lubrication
- Teasing throttle for precise control
- Low air consumption
- A and F versions feature a rotation release button, converting the machine from a drill to a chipper
- AC, CS and ES versions can be converted from a drill to a chipper by changing the tool
- Cushioned piston for smooth operation and longer machine life
- Muffler available to reduce noise
- Right-hand rotation
- Equipped with an SDS adaptor, CP 0009 a, ac and cs can be used with electric hammer drill bits
- The CP 0009 is used for drilling holes from 8 to 25 mm in diameter, and up to 300 mm in depth. However, above 25 mm in diameter, we recommend first performing a test to prevent excessive wear
- Small, easy to handle

## CP 0014

- High power-to-weight ratio
- Six-spline piston provides ample load-bearing surfaces for long life
- Cushioned piston for smooth operation, long life
- Spring retainer
- “D” handle with outside trigger
- Integral, large-capacity oil chamber in the handle provides continuous lubrication
- Teasing throttle for precise control
- Muffler available to reduce noise
- Right-hand rotation



CP 0009  
Rotation release button





# CP 0009 and CP 0014

## CP 0009

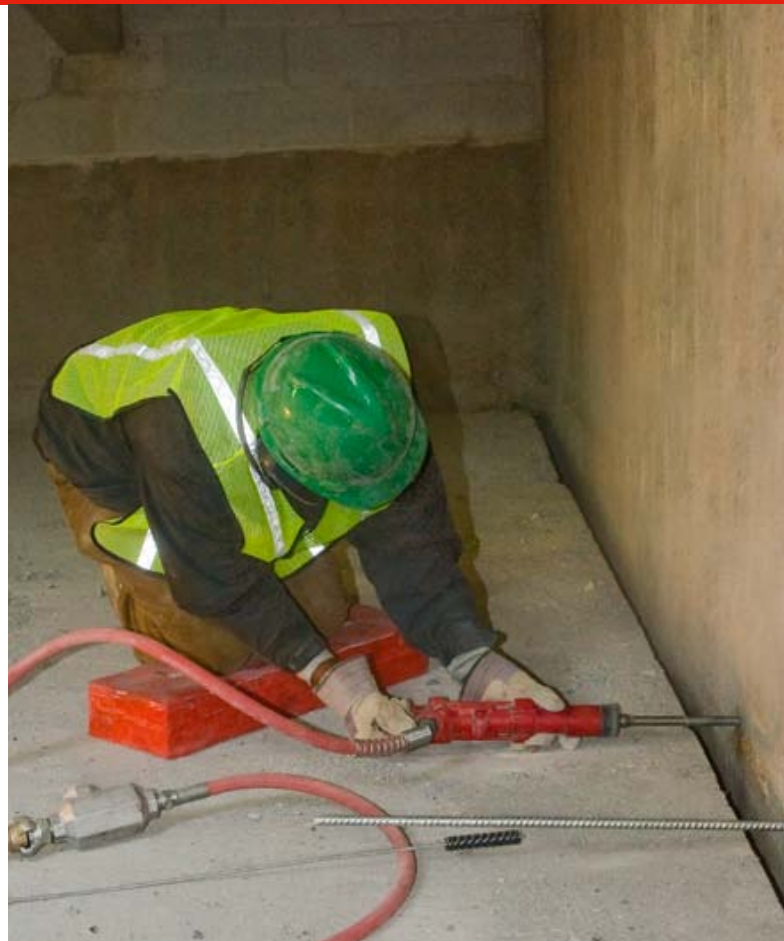
The versatile CP 0009 rotary hammers are ideal machines for a wide variety of building construction and maintenance applications such as:

- Drilling, chipping or chasing in concrete walls
- Roof drilling for the suspension of ventilation ducts in buildings, mines, tunnels etc
- Drilling holes in plaques, monuments, tombstones, etc, for the insertion of plugs, studs etc
- As a hammer, these tools can be used for chipping, scarifying, scaling and cleaning welds
- Drilling holes and chipping in the heating, water and sanitation industries, and in electrical installations

## CP 0014

Ideal for drilling operations which are above the capacity of CP 0009 and where a full size rock drill would be unwieldy, the CP 0014 is the ideal tool. As a rock drill with a normal depth rating of up to 0.6 m. (more in favourable circumstances), it can be used for:

- Bolting applications such as Rawlbolts and foundation bolting
- Quarry pop shots
- Foundation bolts
- Plugging
- Demolition shots and sign-hanging
- Drilling in concrete, granite, limestone, brick work
- As a hammer it will chip concrete, cut chases enlarge cavities, trim brick faces and scabble surfaces



CP rotary hammers		CP 0009 A	CP 0009 AC	CP 0009 CS	CP 0009 E	CP 0009 ES	CP 0009 F	CP 0014 RR	CP 0014 RRBS
Weight	kg	4,0	4,0	4,5	4,0	4,5	4,0	6,5	7,0
Length	mm	375	375	380	375	380	375	480	470
Air consumption	l/s	9	9	9	9	9	9	22	22
Blows per minute	bpm	3420	3420	3420	3420	3420	3420	2520	2520
Rotation speed	rpm	189	189	189	189	189	189	165	165
Drill rate	mm/min	180 <sup>2)</sup> / 160 <sup>3)</sup>	180 <sup>2)</sup> / 160 <sup>3)</sup>	180 <sup>2)</sup> / 160 <sup>3)</sup>	180 <sup>2)</sup> / 160 <sup>3)</sup>	180 <sup>2)</sup> / 160 <sup>3)</sup>	180 <sup>2)</sup> / 160 <sup>3)</sup>	125 <sup>4)</sup>	125 <sup>4)</sup>
Max drilling diameter	mm	32	32	32	32	32	32	44	44
Max drilling depth <sup>5)</sup>	mm	450	450	450	450	450	450	650	650
Air inlet	inch	3/8" NPTF	3/8" NPTF	3/8" BSP	3/8" BSP	3/8" BSP	3/8" NPTF	3/8" NPTF	3/8" BSP
Muffler included		No	No	Yes	No	Yes	No	No	Yes
Vibration level 3 axes (ISO 28927-10) Breaking/Drilling <sup>1)</sup>	m/s <sup>2</sup>	20,2 / 21,2	20,2 / 21,2	20,2 / 21,2	20,2 / 21,2	20,2 / 21,2	20,2 / 21,2	35,4 / 45,3	35,4 / 45,3
Sound power level guaranteed (2000/14/EC) <sup>1)</sup>	dB(A)	-	-	103	-	103	-	-	-
Sound pressure level (ISO 11203) <sup>1)</sup>	dB(A)	-	-	88	-	88	-	-	-
Retainer type		Quick-change	Quick-change	Quick-change	Quick-change	Quick-change	Quick-change	Spring	Spring
Chuck size	mm	Rd 19x95	Rd 19x95	Rd 19x95	Rd 19x14.7 Hex x89	Rd 19x14.7 Hex x89	Spline	Hex 22x82,5	Hex 22x82,5
Part number		T022083	Z0027413	T022322	T022180	T022330	T022511	T022173	T022321

<sup>1)</sup> Important: Full details of measurement are available in the Safety and Operating Instructions of the product (part no 9800 0547 90). It can be found on [www.cprintshop.com](http://www.cprintshop.com)

<sup>2)</sup> 19 mm drill in granite (use as guide only)

<sup>3)</sup> 19 mm drill in concrete (use as guide only)

<sup>4)</sup> 31 mm drill in hard rock/concrete (use as guide only)

<sup>5)</sup> Depending on drilled material