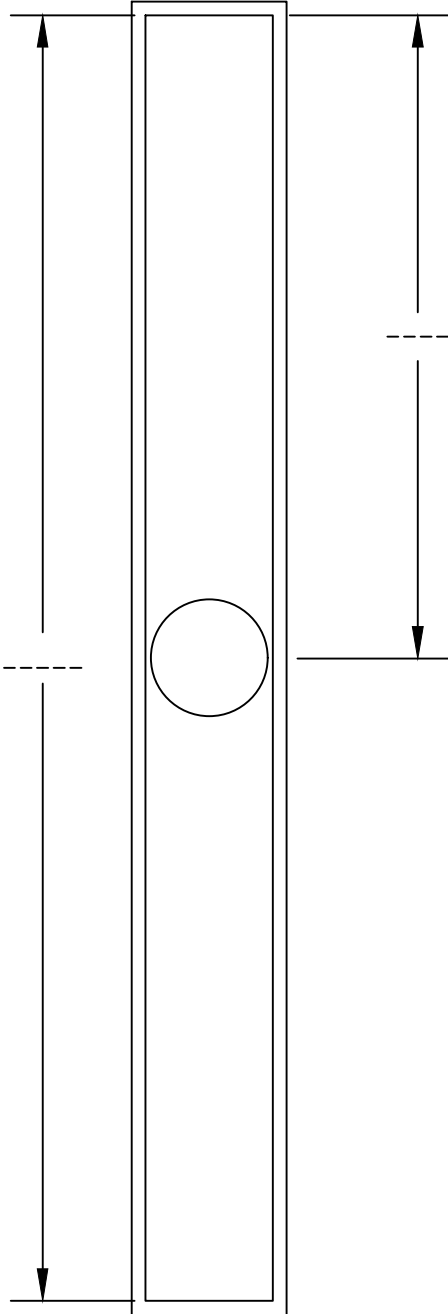




HYDRO BAN Linear Drain Custom Dimensions Form

Overall Length of Drain (Inside Edge or Length of Grate)



Center of Drain to Inside Right Edge

Waste Outlet

- Standard 2" (50.8mm) Diameter, 3" (76.2mm) Length
- 3" (76.2mm) Diameter, 3" (76.2mm) Length
- 2" (50.8mm) Threaded Nipple, 1½" (38.1mm) Length
- Additional Outlets: _____ (Indicate total number of waste outlets)
- Extended Waste Outlet _____ (Indicate length from bottom of trough)

Grate

- Tile-In Grate Item# 9377-0000-TI
- Brushed Stainless Steel Grate Item# 9378-0000-BS
- Polished Stainless Steel Grate Item# 9411-0000-PS
- Oil Rubbed Bronze Stainless Steel Grate Item# 9412-0000-ORB

Approved By: _____

Date: _____

Special Order LATICRETE Hydro Ban Linear Drains are non-returnable and non-refundable

Revision Date: 7/15

Scale: N.T.S.

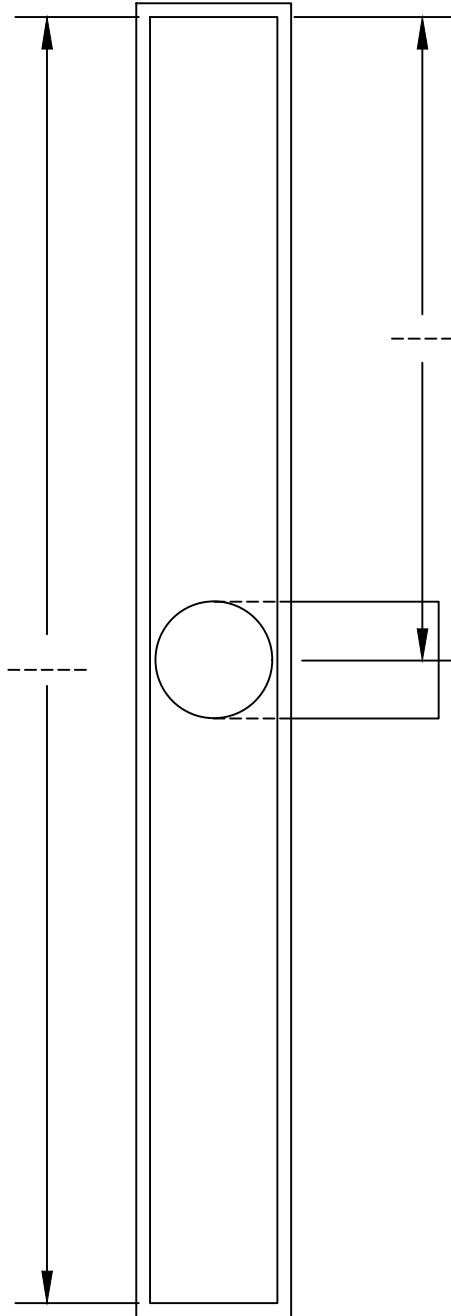
AS A PROFESSIONAL COURTESY, LATICRETE OFFERS TECHNICAL SERVICES FREE OF CHARGE. THE USER MAINTAINS ALL RESPONSIBILITY FOR VERIFYING THE APPLICABILITY AND SUITABILITY OF THE TECHNICAL SERVICE OR INFORMATION PROVIDED.

(C)2015 LATICRETE INTERNATIONAL, INC. ALL RIGHTS RESERVED. THE RIGHT TO UTILIZE LATICRETE DETAILS FOR COMMERCIAL PURPOSES IS GRANTED EXCLUSIVELY TO CONTRACTORS, ARCHITECTS, QUANTITY SURVEYORS, ENGINEERS, AND SPECIFICATIONS WRITERS. LATICRETE (R), LATAPOXY (R) ARE REGISTERED TRADEMARKS OF LATICRETE INTERNATIONAL, INC. US & FOREIGN PATENT AND TRADEMARK OFFICES. MARCA REGISTRADA. ALL OTHER TRADEMARKS ARE PROPERTY OF THEIR RESPECTIVE COMPANIES.



HYDRO BAN® Linear Drain – Side Outlet Custom Dimensions Form

Overall Length of Drain (Inside Edge or Length of Grate)



Center of Drain to Inside Right Edge

- Tile-In Grate Item# 9407-0000-TI-SO
- Brushed Stainless Steel Grate Item# 9408-0000-BS-SO
- Polished Stainless Steel Grate Item# 9409-0000-PS-SO
- Oil Rubbed Bronze Stainless Steel Grate Item# 9410-0000-ORB-SO

Approved By: _____ Date: _____

Special Order HYDRO BAN Linear Drains are non-returnable and non-refundable

Revision Date: 7/15

Scale: N.T.S.

AS A PROFESSIONAL COURTESY, LATICRETE OFFERS TECHNICAL SERVICES FREE OF CHARGE. THE USER MAINTAINS ALL RESPONSIBILITY FOR VERIFYING THE APPLICABILITY AND SUITABILITY OF THE TECHNICAL SERVICE OR INFORMATION PROVIDED.

(C)2015 LATICRETE INTERNATIONAL, INC. ALL RIGHTS RESERVED. THE RIGHT TO UTILIZE LATICRETE DETAILS FOR COMMERCIAL PURPOSES IS GRANTED EXCLUSIVELY TO CONTRACTORS, ARCHITECTS, QUANTITY SURVEYORS, ENGINEERS, AND SPECIFICATIONS WRITERS. LATICRETE (R), LATAPOXY (R) ARE REGISTERED TRADEMARKS OF LATICRETE INTERNATIONAL, INC. US & FOREIGN PATENT AND TRADEMARK OFFICES. MARCA REGISTRADA. ALL OTHER TRADEMARKS ARE PROPERTY OF THEIR RESPECTIVE COMPANIES.