

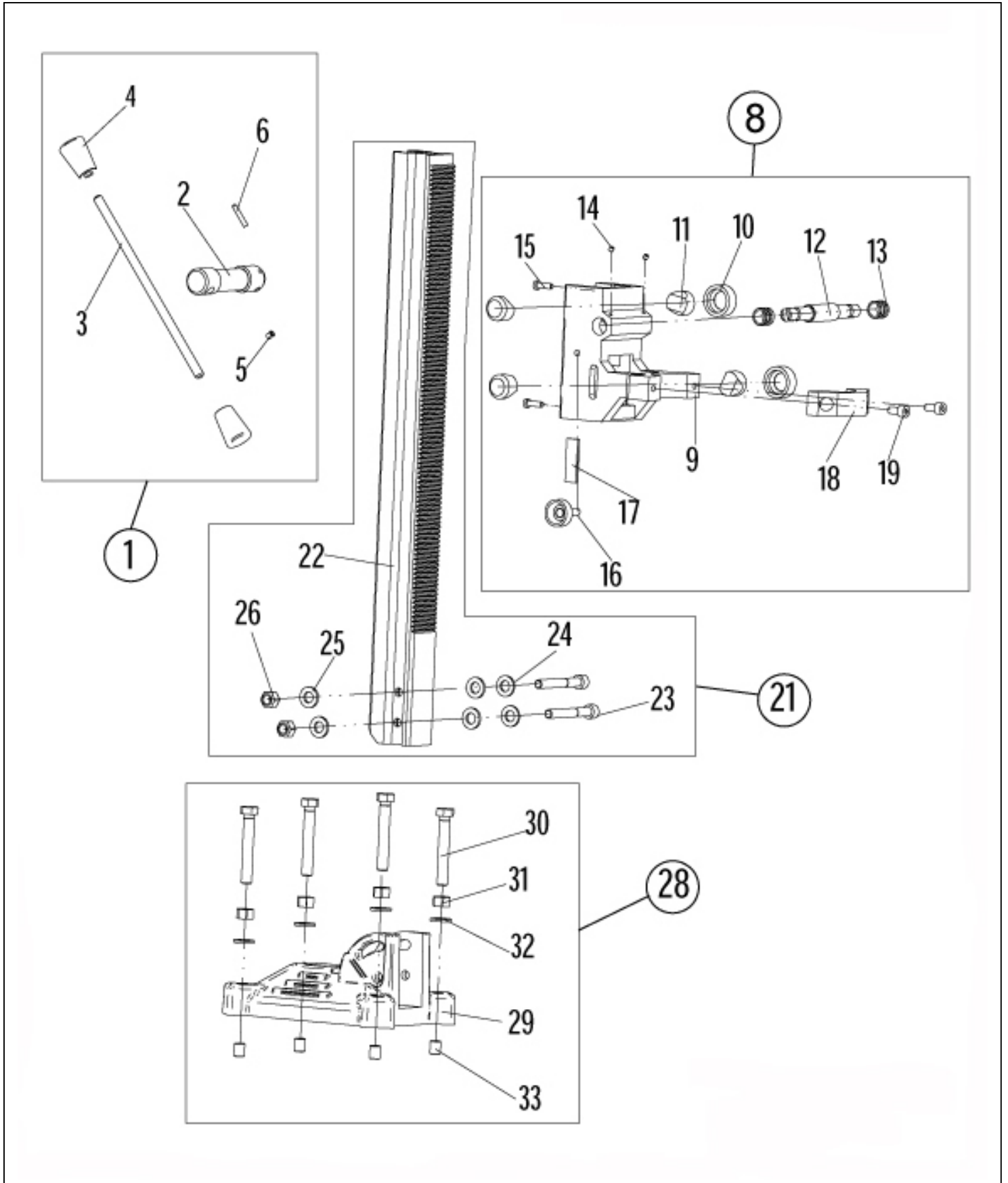
CS UNITEC, INC.

22 Harbor Avenue
Norwalk, CT 06850

Anchor Stand BST 85

Website: www.csunitec.com

Email: info@csunitec.com



Not responsible for typographical errors.

POS. NO.	ITEM NO.	DESCRIPTION
1	15200100	Handle Complete (Incl. 2-6)
2	796UN740	Handle Base
3	796UN746	Arm
4	85000193	Knob
5	85000157	Spring
6	80200627	Pin
8	79685785	Carriage Complete, 53mm Mount
9	796UN785	Carriage, 53mm Mount
10	796UN765	Bushing Cap
11	796UN763	Bushing
12	796UN730	Pinion
13	796UN770	Bushing
14	80200758	Set Screw
15	80201124	Socket Head Screw
16	85000158	Knob
17	796UN779	Clamping Piece
18	796UN818	Motor Cap, 53mm
19	80201145	Screw
21	79685750	Column Complete
22	79620750	Column
23	80201171	Screw
24	80201380	Washer
25	80201384	Screw
26	80201034	Hexagon Nut
28	79685870	Base Complete
29	796UN870	Base
30	80201118	Hexagon Screw
31	80201014	Nut
32	80201381	Washer
33	85000177	Helicoil

CS Unitec, Inc.

22 Harbor Ave, Norwalk, CT 06850

Telephone: 203-853-9522 Toll Free: 800-700-5919 Fax: 203-853-9921

WebSite: www.csunitec.com E-Mail: info@csunitec.com